

BITO DIGITAL SOLUTIONS





Digitisation, networking and automation of processes

The digitisation of products and processes is advancing, and BITO products are already being integrated into many digital business processes today.

Active network components such as routers, repeaters, hubs and beacons process and amplify signals, while passive network components such as connectors, cables and connection sockets ensure reliable communication. BITO has various complete packages in its portfolio that support digitisation in your company quickly, effectively and cost-efficiently.

Please contact us.

We are happy to assist you with your digitisation projects.

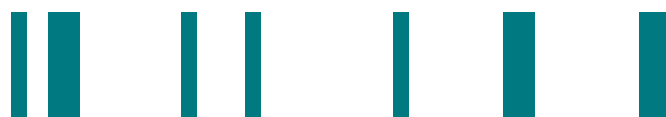
BITO-LAGERTECHNIK BITTMANN GMBH

Product Management / Business Development

Christian.Mohr@bito.com

Tel. + 49 171 811 45 71

www.bito.com



BITO - Digital Solutions

- | | page |
|---|------|
| 1. Warehouse Check or Audit - Clarity for Smarter Warehousing
A new perspective on processes reveals potential that can be translated into results. | 4 |
| 2. Network & WiFi Infrastructure and Services
A complete solution for a future-proofed and reliable wired and wireless infrastructure. | 5 |
| 3. Mobility Hardware and Device Management
Mobile hardware solutions that reduce downtime and increase process reliability. | 6 |
| 4. Smart Volume Scanning and Item Dimensioning
Use article master data for safer processes and cost-efficient warehousing. | 7 |
| 5. Digital Vision in Production and Delivery Chains
See. Analyze. Solve. The digital eye that makes smart factories truly intelligent. | 8 |

Digitisation and shelving/racking



- | | |
|---|----|
| 6.1 Digital flow racks - dynamic Visualisation at fixed Locations
Precise location and fill level display in real time increases productivity and facilitates visibility of materials. | 9 |
| 6.2 Digital flow racks - dynamic Visualisation & automated Re-Ordering
Precise location and fill level display in real time increases productivity and facilitates visibility of materials. | 10 |
| 7. Replace Paper Labels through Digital Displays
Sustainable & Paperless Processes with digital displays (smart labels) | 11 |
| 8. C-Parts Management in Logistics & Production with eKanban
Supplier-independent system „No dependencies on C-parts suppliers. | 12 |
| 9. The smart Pick-by-Voice solution for your warehouse
Empower your workforce with hands-free, voice-guided workflows | 13 |
| 10. The smart Pick-by-Light solution for your warehouse
Higher picking performance: thanks to reduced search and travel times.
The all-in-one solution for Digital Shelf Labeling and Pick-by-Light. | 14 |



Digitalisation of bins/containers

- | | |
|--|----|
| 11. Upgrade with Smart Labels -Visualise & automate processes
Optimal mountings for smart labels on bins and containers | 15 |
| 12. Real-time Tracking for Bins
Optimize workflows & get data transparency with Internet of Bins IOB® & bins/containers. | 16 |
| 13. Permanent Temperature Monitoring and Early Warnings
A complete solution for temperature monitoring and conditioning of sensitive goods. | 17 |
| 14. Bin Management by IOB®
Full Transparency & Control for your Container Pool.
“Do you have high container shrinkage?” | 18 |
| 15. Digitalization of Retail Supply Chain with Internet of Bins IOB®
Seamless tracking and workflow optimization throughout the whole supply chain | 19 |
| 16. Location-based Information for bins in material flow
Optimize workflows & get data transparency with Internet of Bins IOB® & containers | 20 |
| 17. Optimized Assembly Processes through Automation
Streamline, visualize and automate processes using LEO AGVs & Smart Labels. | 21 |

From Check to Audit – Clarity for Smarter Warehousing

BITO + LNConsult | A fresh view on processes reveals potential that can be transformed into results.

Why a First Check is Essential:

A Warehouse or Digitalization Check creates clarity. It shows how your processes perform today, where bottlenecks exist, and where digitalization can drive improvement. The check is fast, structured, and gives you a reliable basis for your next steps.



Warehouse-Check

One-day on-site analysis of warehouse processes, organization, and workflows.

Outcome:

- Transparent overview of current operations
- Identification of bottlenecks and inefficiencies
- Practical recommendations for logistics process optimization
- Quick results with minimal effort



Digitalization-Check

One-day evaluation of digital maturity and optimization potential through technology.

Outcome:

- Assessment of digital tools and systems
- Identification of automation and integration potential
- Recommendations for digital transformation
- Roadmap for future-proof logistics operations

WHY AN EXTERNAL VIEW MATTERS

An external perspective helps uncover blind spots that are often overlooked in day-to-day operations. Independent experts provide benchmarks against state-of-the-art logistics and highlight how other companies successfully address similar challenges. This neutral view delivers unbiased, practical recommendations that can be implemented quickly and effectively.

Intralogistics Audits – From Insight to Action:

An intralogistics audit offers a structured review of warehouse processes. It can be performed as a workshop-based assessment or extended with a data analysis module. Both deliver clear improvement opportunities, while data-driven insights provide a deeper view of bottlenecks and potentials.



Intralogistics Audit

Multi-day workshop-based assessment with process observation and staff interviews.

Results:

- List of improvement opportunities
- Prioritization matrix and SWOT analysis
- Implementation plan ("Magnificent 7")



Intralogistics Audit with Data Analysis

Adds a full data module to the standard intralogistics audit for deeper insights.

Results:

- All deliverables of the Intralogistics Audit
- Prepared datasets and analysis tools
- Data-based view of bottlenecks & potentials

BITO is your partner from consulting to implementation and ongoing support – ensuring that audit results turn into measurable improvements with lasting impact.

BITO-LAGERTECHNIK BITTMANN GMBH
Product Management/Business Development
Christian.Mohr@bito.com | www.bito.com
Tel. + 49 171 811 45 71



BITO
STORAGE SYSTEMS
NORDIC

Network & WiFi Infrastructure and Services

BITO + LNConsult |

A complete solution for a future-proofed and reliable wired and wireless infrastructure.

Have you experienced any of the following networking issues in operational environments?

- Roaming delays or interruptions in the warehouse during picking?
- Connection drops or jitter during MS Teams or VoIP calls in the office?
- Unauthorized device access in retail stores?



EVERYTHING STARTS WITH A CONNECTION

The foundation of digitalization: reliable, secure, and high-performance LAN and WiFi — with optimized connectivity for remote locations.
Modern Enterprise Networking: Simplify. Unify. Automate. Protect.

Enterprise Network Features



Network Management

Cloud-based unified network management with AI of Wired, Wireless, SD-WAN, and IoT devices.



Security

Layered security across the entire infrastructure with network access solutions, air interface protection, hypersegmentation and SDWAN



Analytics

Granular, context-based network analytics including diagnostics and troubleshooting – supported by AI.



Deployment

Flexible deployment options across public cloud, private cloud, and on-premise environments – all backed by industry-leading data security.

Accelerate deployments with Zero Touch Provisioning and streamline daily operations through automated workflows and AI-native insights.

Minimizing downtime
Reducing manual effort



Lowers OpEx
Improves ROI



All while driving down total
cost of ownership (TCO)

Get visibility into every corner of your network. Prevent bad connections before they begin. Better protect from the remote edge to the data center.

BITO-LAGERTECHNIK BITTMANN GMBH
Product Management/Business Development
Christian.Mohr@bito.com | www.bito.com
Tel. + 49 171 811 45 71



BITO
STORAGE SYSTEMS
NORDIC

Mobility Hardware and Device Management

BITO + LNConsult | Mobile hardware solutions that reduce downtime and increase process reliability

Speed and Accuracy:

Scanners and imagers capture and process data within seconds – enabling more efficient workflows (e.g., inventory, picking, replenishment).

Time Savings:

Automation of manual processes and the use of mobile applications help eliminate unnecessary paper documents.

Employee Satisfaction:

Mobile solutions are designed for ease of use and ergonomic handling – tailored to employees and their specific use cases.

Secure Mobile Apps:

Pre-configured applications run in a protected environment – fully integrated into the customer's IT infrastructure.



Robuster mobiler Computer

High-demand scanning with a gundevise (Logistics, Manufacturing)



PDA

Full-Touch operations on big screen, communications & VoIP, photo documentation & navigation (Logistics, Retail)



Smart wearable

Smart user guidance – lightweight device, standalone or combined with mobile computers or workstations (Logistics, Manufacturing, Retail)

THE RIGHT DEVICE MAKES ALL THE DIFFERENCE

We help you choose and set up the ideal mobile hardware – brand-independent, preconfigured, and ready for immediate use. For smoother workflows, fewer errors, and technology that grows with your needs.

Advanced Services & Support

- Device setup/preparation for new locations
- Staging for new devices
- Staging after repair or for replacement devices
- Advance replacement device delivery
- Spare parts management
- Technical support (hotline, remote)
- Device imaging and management via
- Mobile Device Management (MDM)

Mobile Device Management Software



Supported Platforms:



Deploy, manage, secure mobile devices and the content they store, keep corporate data safe, and remotely monitor and troubleshoot any device from an easy-to-use central console.



BITO-LAGERTECHNIK BITTMANN GMBH
Product Management/Business Development
Christian.Mohr@bito.com | www.bito.com
Tel. + 49 171 811 45 71



BITO
STORAGE SYSTEMS
NORDIC

Smart Volume Scanning and Item Dimensioning

BITO + LNConsult | Use article master data for safer processes and cost-efficient warehousing.



Improves process quality and safety in the warehouse

Enhances the accuracy of article master data for reliable operations.



Delivers legally compliant, high-precision data

Captures exact dimensions and weight for reliable documentation.



Reduces warehousing and shipping costs

Uses exact item dimensions to optimize packaging size.



Ensures billing accuracy and investment security

Supports transparent and efficient invoicing through precise data..



WHY SIZE MATTERS

With smart volume scanning, you capture exact dimensions, weight, and shape of goods – directly enriching your article master data. This enables accurate transport cost calculation, optimized storage and picking, and detection of underdeclarations.

A simple plug-and-play step toward efficient, error-free logistics.

VOLUMIO Features & Benefits

Fast and user-friendly data capture

Quickly records dimensions, weight, and images for article master data.

Flexible usage

Operates in standalone or connected mode for maximum adaptability.

Secure user management

Assigns roles and access levels to ensure control and data protection.

Anpassbare Einstellungen
Unterstützt maßgeschneiderte Konfigurationen für Felder, Dateiformate, Hierarchien und mehr.

Image management

Allows image tagging and auto-upload for accurate data documentation.

Workflow control

Includes workload planning with status overviews for process visibility.

Always up to date

Supports automatic or manual software updates for new features and security.

Efficient data handling

Enables drag-and-drop imports/exports and supports USB, S/FTP and cloud.

Wireless connectivity

Connects seamlessly with measurement devices like scales and calipers.

BITO-LAGERTECHNIK BITTMANN GMBH
Product Management/Business Development
Christian.Mohr@bito.com | www.bito.com
Tel. + 49 171 811 45 71



BITO
STORAGE SYSTEMS
NORDIC

Digital Vision in Production and Delivery Chains

BITO + LNConsult | See. Analyze. Solve.
The digital eye that makes smart factories truly intelligent.



Always zooming in on what matters
Precisely recording the current state and proposing the right improvements.



Smart analysis and insights
An integrated neural network analyzes the images locally, with no need for external servers.



Perfection made simple
Easy-to-install plug-and-play solution, ideal for retrofits and fully customizable to your needs.



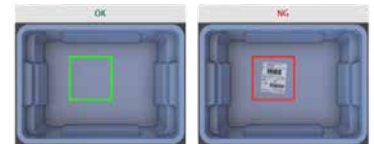
HOW VISUAL INTELLIGENCE WORKS

ivii iriis features a camera module that captures precise images of any work step. The integrated AI compares current images with pre-taught target images and provides feedback. Training can be done easily on site, with neural networks tailored for specific tasks.

User Case: Bin Check Target VS. Actual Always

Residual moisture detection or degree of soiling in the bin

Only if needed, bin is flagged or automatic ejected for cleaning process – saves time and money



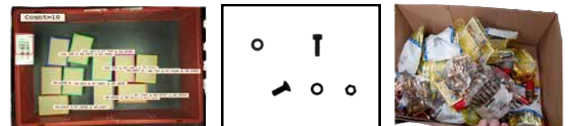
Quality Check of bins - check on any defects on the bins or open/closed covers

Check on broken parts, overcrowding
eg. – avoiding any issues in further processes



Bin Content Check

Counting parts,
item identification,
photo documentation



Use Case: Pallet Inspection “smartread”

Automated goods receiving and depalletizing for error-free storage and recognition of packing patterns, multi-code reading, reading of OCR data, determination of the position and orientation of the containers on the pallets, detection of damaged or non-ordered products and the forwarding of relevant coordinates the downstream robotics for precise depalletizing.

BITO-LAGERTECHNIK BITTMANN GMBH
Product Management/Business Development
Christian.Mohr@bito.com | www.bito.com
Tel. + 49 171 811 45 71



BITO
STORAGE SYSTEMS
NORDIC

Digitalisation of flow racks - dynamic visualisation at fixed locations

BITO + LNConsult | Precise location and fill level display in real time increases productivity and facilitates visibility of materials.



BENEFITS

- Replacement of paper labels
- Real-time information about work orders, material changes
- Automatic fill level detection via sensors
- Automatic reordering via sensors or at the touch of a button

100%
material & process
transparency

15%

Productivity increase
near Point of
use

70%
faster material
location

WAREHOUSING

- Dynamic display of storage locations
- FIFO/FEFO visualisation directly at the storage point
- Minimised errors through visual guidance

LOGISTICS

- Digitisation of paper labels
- Simplified navigation for cross-docking operations
- Visualised Goods-to-Person processes

MANUFACTURING

- Status information for on-site components
- Displays remaining time or blocking status



Digital Flow Racks - Dynamic Visualisation & Automated Re-Ordering

BITO + LNConsult | Real-time displays and sensors for better productivity and visibility.



BENEFITS SMART LABELS

- Real-time information on work orders and material changes
- Automatic reordering at the push of a button
- Status indication via display and LED

BENEFITS SENSOR SWITCH

- Quietly detects box removal or tilt
- Triggers real-time reorders so shelves never sit empty and parts never run out
- Eliminates manual scanning or intervention entirely

WAREHOUSING

- Dynamic display of storage locations
- FIFO/FEFO visualisation directly at the storage point
- Minimised errors through visual guidance

LOGISTICS

- Clearly marked loading and unloading zones
- Simplified navigation for crossdocking operation
- Visualized goods-to-person processes
- Instant replenishment through seamless kanban automation

MANUFACTURING

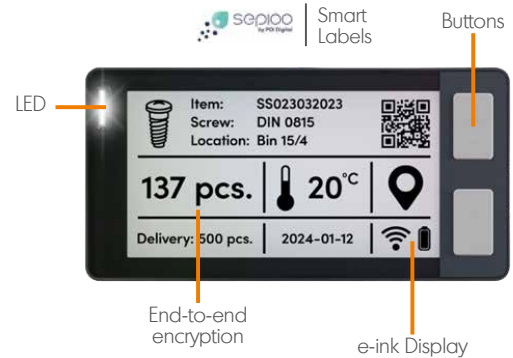
- Status information for on-site components
- Displays remaining time or blocking status
- Ensures uninterrupted supply at every rack

Replace Paper Labels through Digital Displays

BITO + LNConsult | Sustainable & Paperless Processes with digital displays (smart labels)

Savings Potential with Smart Labels:

- Eliminate the need for printers and consumables used for paper labeling of storage locations, shelves, and containers
- No storage or disposal costs for consumables
- Avoid printing-related expenses such as maintenance and material changes
- Save time through guided, digital processes



Enrich information display with real-time stock & product data



Reduce picking errors with dynamic displays & integrated LED guidance



Clear product & location details – even in chaotic storage systems



Switch pages, request support or work orders, count items or confirm tasks



Trigger actions via button press or sensors – for instant confirmations

SMART LABEL - SMART CHOICE

The simple path to a paperless factory and logistics – smart labels replace traditional paper printing with ePaper displays that can be updated remotely at any time. This reduces costs, increases productivity, and offers a sustainable, long-lasting solution for various processes and applications.

Smart Label Solution USP's



100% transparency on material and order movements – including automated demand detection (e.g. screw wholesale)



Increase in productivity through improved production planning – automated booking, no manual scanning



Faster material identification and location



Boost productivity through seamless workflow integration



BITO-LAGERTECHNIK BITTMANN GMBH
Product Management/Business Development
Christian.Mohr@bito.com | www.bito.com
Tel. + 49 171 811 45 71



BITO
STORAGE SYSTEMS
NORDIC

C-Parts Management in Logistics & Production with eKanban

BITO + LNConsult | Supplier-independent system | „No dependencies on C-parts suppliers.“



Smart Label



Scale

KEY FEATURES

- Demand detection via sensor technology (scale or push button on smart label)
- Order events sent to central purchasing or directly to suppliers via interfaces
- Material content & order status visible on display and via LED signals
- Material consumption tracking through dashboard in real-time visibility
- Automated order monitoring
- Seamless integration into your ERP system possible

BENEFITS

- Integration of all your suppliers and articles in one solution
- Efficient procurement of your requirements using e-Kanban
- Transparency of all articles and suppliers in one dashboard
- Cost reduction through automation
- Downtime prevention thanks to continuous material availability
- Reduce ordering costs

100%

Integration of
all suppliers &
articles

Up to
70%
Process
savings

100%

paperless

EL/KA/SY® PLATFORM

The el/ka/sy® platform combines all processes in one user-friendly solution, flexibly select your suppliers and optimise your kanban systems. real-time monitoring, intelligent analyses and maximum security for maximum efficiency.



BITO-LAGERTECHNIK BITTMANN GMBH
Product Management/Business Development
Christian.Mohr@bito.com | www.bito.com
Tel. + 49 171 811 45 71



BITO
STORAGE SYSTEMS
NORDIC

The smart Pick-by-Light solution for your warehouse

Higher picking performance: thanks to reduced search and travel times.

BITO + LNConsult | The all-in-one solution for **Digital Shelf Labeling** and Pick-by-Light



THIS COMBINATION ALLOWS:

- Pick-by-Light with 7-colour LED – Replacement of paper labels
- Flexible order/article assignment thanks to radio-based, battery-powered smart labels
- Route optimization for pickers
- Adaptable picking zones & multi-order picking
- Hands free for order picking
- Scalable architecture
- Future-proof solution
- Cost-effective smart solution compared to wired solutions
- No more wiring necessary



Successful customer projects:

**dorma
kaba**

TRUMPF

satisloh

TESTEX

**sehen!
wutscher**



Project Insights:



BITO-LAGERTECHNIK BITTMANN GMBH
Product Management/Business Development
Christian.Mohr@bito.com | www.bito.com
Tel. + 49 171 811 45 71



BITO
STORAGE SYSTEMS
NORDIC

The smart Pick-by-Voice solution for your warehouse

BITO + LNConsult | Empower your workforce with hands-free, voice-guided workflows



THIS COMBINATION ENABLES:

- Hands-free, voice-guided workflows
- Compatibility with a wide range of WMS and ERP systems
- Fewer errors and improved order accuracy
- Optimised warehouse processes
- Fast integration of new data with minimal configuration
- Reduced training time



Successful customer projects:



Project Insights:



BITO-LAGERTECHNIK BITTMANN GMBH
Product Management/Business Development
Christian.Mohr@bito.com | www.bito.com
Tel. + 49 171 811 45 71



Upgrade with Smart Labels –

Visualise and automate processes

BITO + LNConsult | Optimal mountings for smart labels on bins and containers



Use case: U-Turn
Returns, reusable containers, order picking
Automated process management
without paper labels or manual scanners



Problem:

Returns and circulation processes are often difficult to track. Mix-ups, lack of transparency regarding filling status and standing times lead to inefficiencies.

Objective:

Digital displays attached directly to the containers will show status information such as 'return received', 'ready for reuse' or 'for cleaning'.

Added value:

Transparency regarding returns,
faster circulation,
clear processes.



Use case: SL86 large container
Automotive industry, mechanical engineering, retail trade
Shock-resistant, industrial-grade displays
with automatic updates on process progress



Problem:

In robust and highly dynamic logistics environments such as the automotive industry, the flow of information about large container volumes is often delayed or no longer up to date.

Objective:

Digital displays on containers enable the display of production status, destination station, recipient or contents.

Added value:

Avoid downtime, ensure clear allocation, and
increase security in production supply.



Use case: XL
Shelf storage, small parts storage
Automated reordering process (e.g. via eKanban),
visual removal indicator



Problem:

When storing C-parts or small parts, it is often difficult to maintain an overview: removals are not documented and refill requirements are not identified in good time.

Objective:

Displays on the boxes show stock status, minimum stock levels, item information or picking information.

Added value:

Greater supply reliability, fewer missing parts,
paperless replenishment control.



Use case: MB
Shelf storage, e.g. fresh food, medicine
Information about the contents:
on the display directly on the containers.



Problem:

Compliance and traceability data:
Ensure consistent labelling, reduce human error
and simplify audits.

Objective:

Process status tracking – via digital display
showing the status of the contents in the container.

Added value:

Time stamps for process steps:
Complete documentation from filling to storage,
transport and inspection to return.
Inputs from staff directly on the container.



Real-time Tracking for Bins

BITO + LNConsult | Optimize workflows & get data transparency with Internet of Bins IOB® & containers



Compliance & traceability data
Ensure consistent labeling, reduce human error, and simplify audits



History of data points
Track record of distance travelled



Time-stamping of every process step
From filling, storage, transport, inspection, to return



Location-based Information
Automatically display process-relevant info based on location



Relevant info directly on the bin
Batch info, work instructions, product IDs, special handling notes



Real-time bin locationing & tracking
Indoor: HF/BLE tracking/zoning
Outdoor: GPS-based tracking with daily positioning & on-demand tracking



Application fields

PRODUCTION

- Assignment of bins to production batches or lines
- Visibility of dwell time per production area
- Digital approval and locking of production tasks via display

LOGISTICS

- Seamless tracking throughout the supply chain
- Reduction of losses and misdeliveries
- Proactive alert in case of delays or downtime

RETAIL

- User-friendly identification via blinking LED signals
- Traceability of product paths in case of complaints or recalls
- Avoidance of overstocks and stockouts

BITO IOB® Bins

Stack & Nest
Container: U-Turn



return
circulation
container

Attached Lid
Container: MB



return
circulation
container

Storage Bins:
RK



Shelf storage
and small parts
handling

Shelf Storage and
Assembly Bins: SK



Shelf storage
and small parts
handling

Euro Stacking
Container: XL



Shelf storage
and bin picking

Heavy Duty
Container: SL



Transport
container



Permanent Temperature Monitoring and Early Warnings

BITO + LNConsult | A complete solution for temperature monitoring and conditioning of sensitive goods.

Prevent Quality Loss and Safety Risks with Real-Time Temperature Monitoring:

- Smart devices measure the temperature during the transport and storage of sensitive goods such as batteries, food, or pharmaceutical products.
- Continuous monitoring throughout the delivery process helps detect deviations, enables immediate action, and prevents quality losses or safety risks.
- Electronic recording and analysis of the data can increase efficiency and reduce costs.



PROACTIVE TEMPERATURE MONITORING

Smart devices continuously track temperature during transport and storage of sensitive goods. Customizable alerts notify you of critical changes, allowing immediate action to prevent quality loss and ensure product safety. Gain full control and visibility across your entire supply chain.



Temperature
incl. alarm function



Schock- and damage detection
temporal & local



Fire Warning
incl. alarm function



Lid Opening
number & timing of opening



Locating
indoor & outdoor



Lid Position
open/closed

SLOC Solution

SLOC Temperature Tracker

Temperature Tracking can measure temperature, fire alarms, lid openings and position, location, and shocks.



SLOC | Temperature Tracker & Monitoring

SLOC Monitoring

Condition Monitoring measures values such as shocks and vibrations, temperature, air pressure, humidity and motion.



Bin Management by IOB®



Full Transparency & Control for your Container Pool

“Do you have high container shrinkage?”

Full transparency.
More control.
Greater efficiency.

- Digital booking & ID-based tracking (RFID, barcode)
- Detection of losses, damage & bottlenecks
- Automated goods receipt and goods issue recording
- Full integration into existing ERP/WMS systems
- Dynamic reports & dashboards for data-based decisions

Your challenges – Our solutions

The Problem

- Lack of transparency, high shrinkage rates
- Time-consuming recording with paper & Excel
- Inefficient utilization of containers
- Determining the required pool size

BITO IOB® Solution

- Real-time or passive tracking, link to tags or sensors
- Automated, digital bookings & account management
- Optimization through cycle time analysis & usage evaluation

Advantages

- Less shrinkage & losses
- Reduced inventory & scanning efforts
- Higher asset utilization & scalability
- High level of service



BITO Services – everything from a single source

- Consulting & process analysis
- Implementation & pilot projects
- System integration & interfaces (ERP, WMS)
- Service & maintenance

BITO-LAGERTECHNIK BITTMANN GMBH
Product Management/Business Development
Christian.Mohr@bito.com | www.bito.com
Tel. + 49 171 811 45 71



BITO
STORAGE SYSTEMS
NORDIC

Digitalization of Retail Supply Chain with Internet of Bins IOB®

BITO + LNConsult | Seamless tracking and workflow optimization throughout the whole supply chain

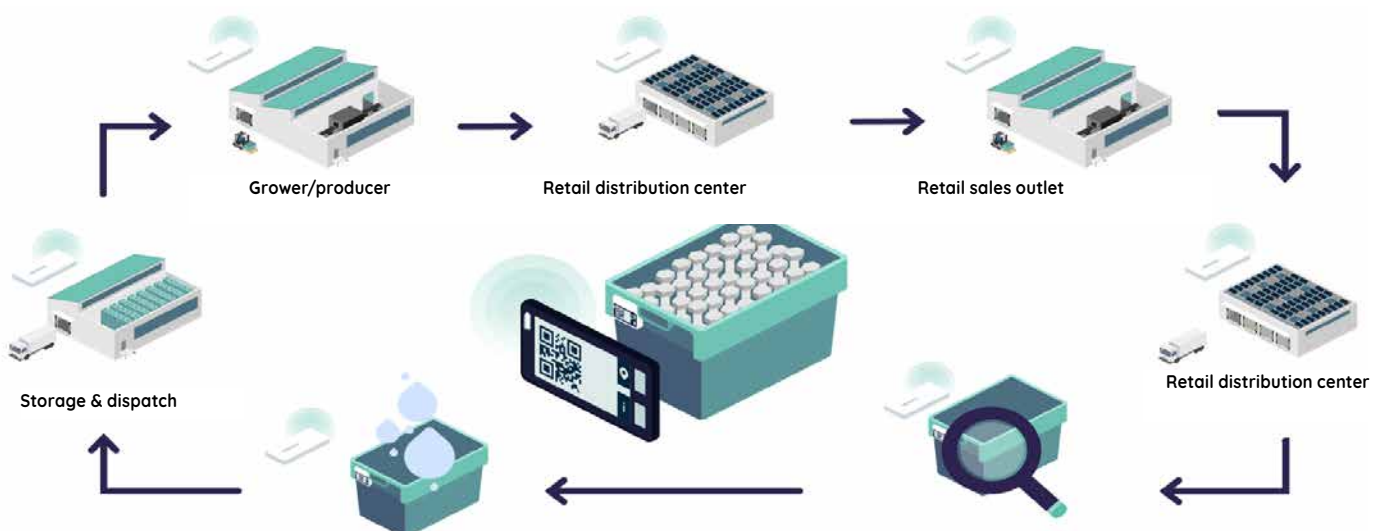
Benefits LNC Logistics Platform:

- Real-time status tracking
- Automated inbound & outbound processes
- Customizable workflow rules & event-based triggers
- Monitoring & alerting
- Dashboard & reporting
- Integration of smart labels and sensors



KEY BENEFITS

- Elimination of relabeling efforts between facilities – saving paper and time
- Tracking of goods and item zoning
- Automation of goods-in, shipping and relocation – enabled by radio-based smart labels and reduced manual scanning/identification
- Dynamic updating of routing during disruptions
- Condition-based control of shipping (e.g., based on bin temperature or shock)
- Provision of digital proof of delivery (POD) via bin status
- Flagging of issues such as delays or misroutes
- Optimization of loading with zone-based priorities in the distribution center
- Transparency to prevent loss of bins and labels during shipping and handling
- Ensuring secure readability of labels
- Implementation of washing-proof technologies and processes



Use Case Connected Fresh Food Cycle

BITO-LAGERTECHNIK BITTMANN GMBH
Product Management/Business Development
Christian.Mohr@bito.com | www.bito.com
Tel. + 49 171 811 45 71



BITO
STORAGE SYSTEMS
NORDIC

Location-based Information for bins in material flow

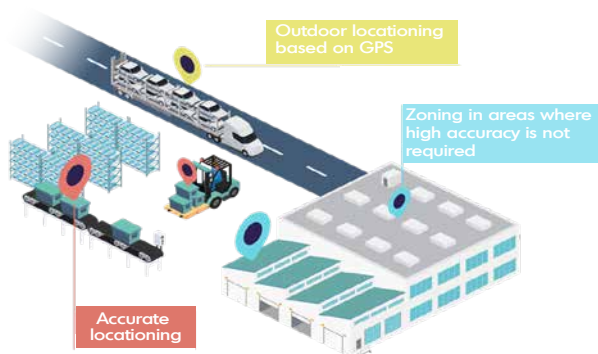
BITO + LNConsult | Optimize workflows & get data transparency
with Internet of Bins IOB® & containers



- Real-time status tracking
- Automated inbound & outbound processes
- Customizable workflow rules & event-based triggers
- Monitoring & alerting
- Dashboard & reporting
- Integration of smart labels and sensors

Right Data at the Right Time

Choose the best tracking solution for your indoor & outdoor use case and trigger location-based services (information on display and system events).



Real-time transparency

No scanning,
no lost inventory



Workflow boost

Faster searches,
quicker response time

Warehouse-to-Warehouse

Objects are moved between different production sites/buildings/rooms.
Depending on the location, different information is shown on the display.



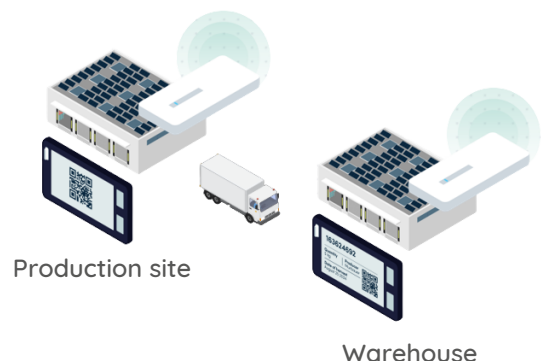
Dynamic information & highlight

Digital display & LED flash



Condition monitoring

Detects impact and
handling issues with sensors



BITO-LAGERTECHNIK BITTMANN GMBH
Product Management/Business Development
Christian.Mohr@bito.com | www.bito.com
Tel. + 49 171 811 45 71

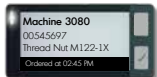


BITO
STORAGE SYSTEMS
NORDIC

Optimized Assembly Processes through Automation

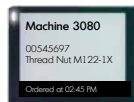
BITO + LNConsult | Streamline, visualize and automate processes using LEO AGVs & Smart Labels.

BITO Bins & Containers
STORAGE SYSTEMS
NORDIC



sepico by PDI Digital | Smart Labels

BITO Bins & Containers
STORAGE SYSTEMS
NORDIC



sepico by PDI Digital | Smart Labels

WAREHOUSING

- Material status visible per bin and production line
- Crate rotation automatable according to the FIFO principle

LOGISTICS

- Optimized supply for supermarkets or production lines
- Tracking of empty containers

MANUFACTURING

- Bin status triggers automatic replenishment
- Integration with production control systems (PPS/MES)

Use Case: Production Supply

Smart Labels are used for manually requesting consumables (C-parts) or semi-finished goods. With a single push of a button on the Smart Label, customer-specific workflows are triggered, for example:



Stock removal from an automated small-parts warehouse



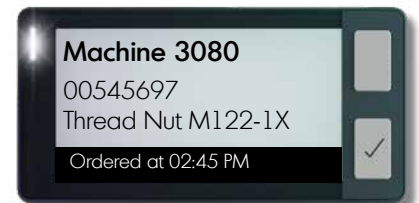
Status display directly on the Smart Label



Booking of the goods in the WMS



Provision of the goods at the transfer station



sepico by PDI Digital | Smart Labels



Automated supply of all workstations is handled by the AGV system.

The LEO AGV manages in-house transport of goods — from pick-up to return. Smart Labels also serve as dynamic displays for the current order and crate status. As a result, no paper is needed, and manual processes are eliminated.

BITO-LAGERTECHNIK BITTMANN GMBH
Product Management/Business Development
Christian.Mohr@bito.com | www.bito.com
Tel. + 49 171 811 45 71



BITO
STORAGE SYSTEMS
NORDIC

BITO DIGITAL SOLUTIONS

BITO STORAGE SYSTEMS NORDIC

Agerhatten 16C, indgang 4
DK-5220 Odense SØ
Tel: +45 70 21 51 51
info.dk@bito.com
www.bito.com

Poststugan 606
SE-211 65 Malmö
Tel: +46 42 15 19 10
info.se@bito.com
www.bito.com

Äyritie 12 B
FI-01510 Vantaa
Tel: +358 10 324 6510
info.fi@bito.com
www.bito.com

REOLTEKNIKK AS

Majorvegen 12
NO-2030 Nannestad
Tel: +47 6393 5200
post@reolteknikk.no
www.reolteknikk.no



BITO
STORAGE SYSTEMS
NORDIC