

STORAGE TECHNOLOGY

That's us!

BITO

BITO
STORAGE
SYSTEMS



BITO is one of the leading family companies in Germany.

Founded nearly 170 years ago, today we rank among Europe's top providers in the storage technology industry.

The secret to our success: Tradition, reliability and the continual development of new product ideas. But success alone is not our goal – we take our social responsibility to our employees and their relevant regions seriously, too.

> Just get to know us!

Winfried Schmuck, Group Managing director

About us – "Made in Germany"

BITO

BITO is a medium-sized company with over 950 employees, specialising in the areas of warehouse equipment and picking systems. At our locations in Meisenheim and Lauterecken in South West Germany, we have over 140,000 m² of production facilities devoted to customer-oriented, ground-breaking, top-quality products.

BITO is one of the few end-to-end suppliers of warehouse systems in the intralogistics industry. We focus on direct business – fast processing of orders through catalogue, shop or sales centre.

Lauterecken
plant

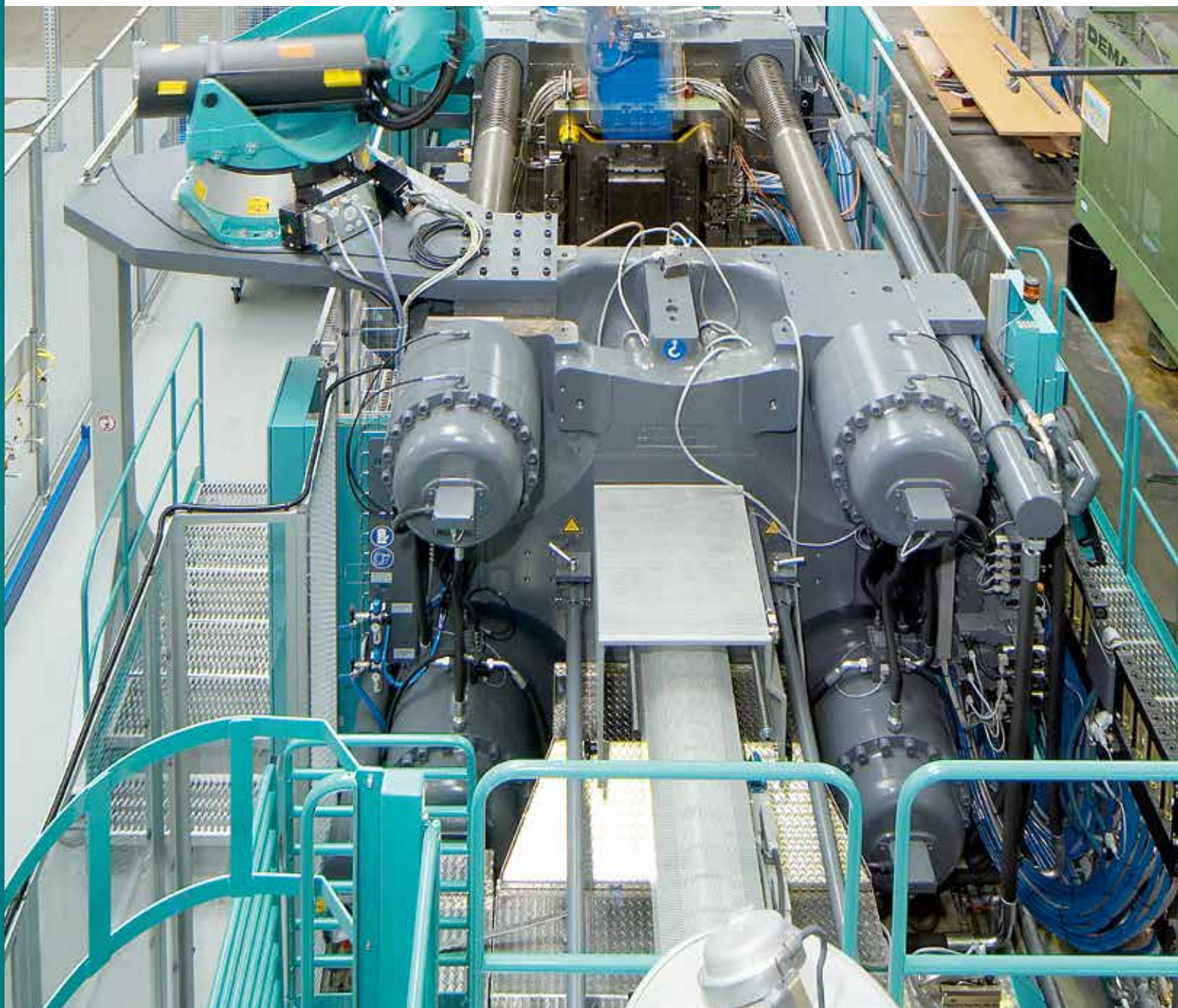
Our other focus is on the planning, project management and implementation of complex and demanding warehouse concepts.

Meisenheim
plant





"Most modern production plant in the industry"



Bins & containers – Production



This production plant for plastic containers is among the most modern in the industry. BITO containers are manufactured on powerful, highly modern injection moulding machines. Containers can also be adapted to customer-specific requirements in a large finishing centre. BITO finishes containers in a wide variety of ways, for example with the automatic application of barcode labels and grinding or drilling of containers for use as fire-safety containers. Of course, we also supply containers with company logos and messages, special dimensions, customised inlays and reinforcing features. The entire manufacturing process combines high levels of automation with utmost versatility.



Lauterecken
production plant



"High-quality design and sustainable manufacturing"



Bins & containers – Series

BITO

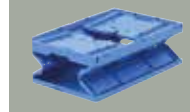
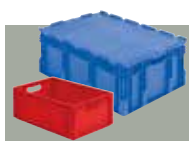
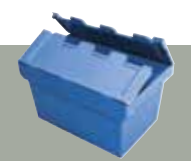
Modern, rationally designed warehouses use a large number of containers. BITO's product range has the right container for any industry and any application – whether for manufacturing, picking, storage or transport; for every application, every lot size and every product size:

- > Storage bins and containers with pick opening
- > Storage and handling bins
- > Kanban containers
- > European size stacking containers
- > Small parts containers
- > Multi-purpose containers
- > Plastic trays
- > Folding containers and tilt-open containers
- > Large volume containers
- > Pallet boxes
- > Folding bulk containers

BITO containers aren't just outstanding for their flexibility and cost-effectiveness, but also due to their attractive design and sustainable manufacturing– you can see that from our multiple international awards.



reddot design award
winner 2012





"Advanced manufacturing processes"



Shelving & Racking – Production

BITO

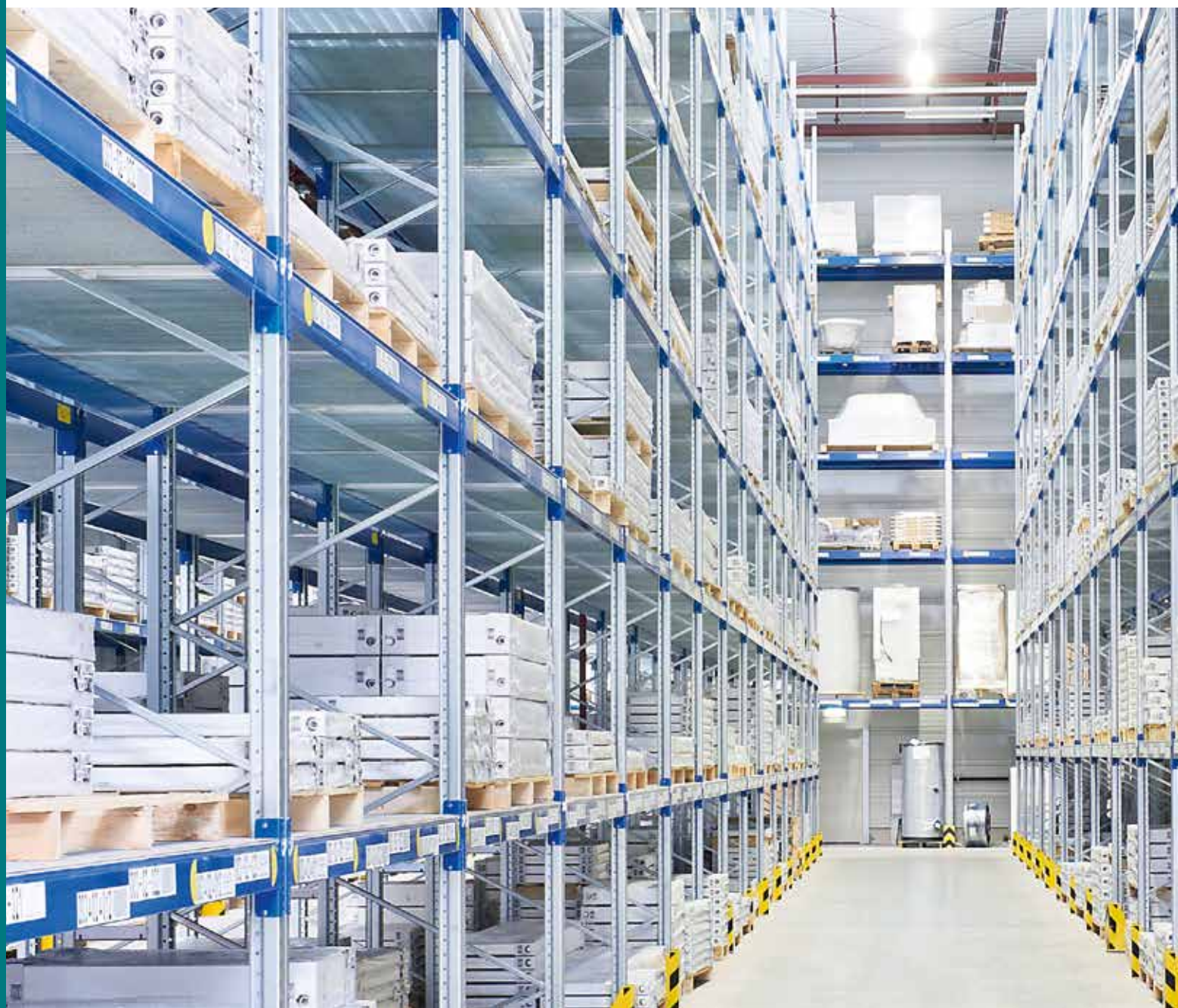
Our production plant in Meisenheim, South West Germany, builds all BITO shelving and racking systems – without exception: for small, large, light weight, heavy weight, bulky and long goods, for use as stand-alone bays or in complex shelving and racking installations as well as in multi-tier facilities. Manufacturing there is based on the latest state of the art. The high level of automation in our manufacturing process guarantees that all products are absolutely true to size and of a consistently high quality. Professional work preparation and continuously optimised manufacturing processes guarantee fast, clean order throughput and therefore the reliable servicing of orders.

Most advanced
bending, punching and
edging machines





"Effective shelving and racking installations: Save space and time!"



Shelving & Racking – Types

BITO

Effective shelving and racking installations are characterised by the space and time they save. The only prerequisite is that you use the right racking system. It has to take into consideration the spatial requirements, the type and variety of articles to be stored and operational organisation. As a complete equipment provider for warehouse equipment, our product line includes every type of shelving and racks: Bay shelving with a plug or screw system, extra large shelves, wide span shelves, pallet racking, shelves for long item storage, multi-tier facilities, live storage systems for both cartons and pallets and the highest-performance racking technology for automated installations.

> **We would be happy to advise you in selecting the perfect system.**

Bay shelving
and pallet racking
in combination





"More than 5,000 warehouse equipment products directly from the manufacturer"



»BITO direct«

BITO

Fast ordering through catalogue or Internet, a variety of special offers, uncomplicated advice from trained employees by telephone, fast response times to questions, a good price/performance ratio, the shortest possible delivery times and – when things don't work out – fast, competent returns processing – those are the criteria for a smoothly functional direct business. As the manufacturer of over 5,000 warehouse equipment products "Made in Germany" and know-how going back over 50 years, we meet those requirements. Our continual observation of products and the market lets us add to our offering and offer an outstanding purchasing portal for your warehouse equipment.





"Installation of racking by trained assembly teams"



Service in direct business

BITO

Delivery service

Nearly 90% of all products from our catalogue and Internet shop are handed to the shipper within 72 hours.

Technical advice

A call centre with trained, engaged employees is available for your questions during regional working hours. If the project turns out to be more complicated than anticipated, we can send one of our more than 30 technicians at any time. Regional warehouses offer you the option of picking up many of our products directly.

Assembly

If you are short of time or staff to set up your shelving or racking installation, we will be pleased to assist you with one of our professionally trained assembly team.

Logistics service
provider on-site





"Safe project management through higher transparency and efficiency"



»BITO solutions«

BITO

Fast goods flow, slim workflow and efficient processes in intralogistics are only possible with the optimum configuration for warehouse and picking systems. As an end-to-end provider, we have a clear advantage there. We manufacture all our components for high-performance warehouse concepts ourselves, and also handle our own project planning and management. In-house production of shelving and racking as well as of bins and containers guarantees safe project management with higher transparency and efficiency. Schedules are easy to calculate and are carried out punctually, coordination between the individual departments is smooth and additional interfaces are eliminated.



Order picking
systems





"Customer-focused and reliable support"



Service in project work

BITO

Customer orientation and support from order preparation to commissioning of your racking installation takes top priority at BITO.

Support

Every project starts with competent consultation with experienced regional sales managers, in close coordination with the project managers in our sales department.

Financing

If an investment is worthwhile, it shouldn't fail for lack of financing. BITO can broker lucrative leasing offers together with strong partners.

Project coordination

Continuous, reliable support as the order is handled is our goal. That includes the exact scope, dimensionally accurate production, comprehensive quality assurance and complete installation coordination – truly an "end-to-end care-free package".

Inspection and maintenance

Operators of shelving and racking installations are obliged to have their facilities inspected at least once a year. The BITO racking inspectors handle this task, directly requesting offers for replacement parts needed and taking responsibility for scheduling management of follow-up inspections.

For dynamic racking installations or installations with electronic control elements, BITO recommends its customers conclude maintenance contracts to monitor functionality. This can avoid malfunctions with unpleasant consequences.



"Trainees – from apprenticeship to an academic degree"



BITO as employer



Our staff is our most valuable asset. This is why personnel development is highly valued at BITO. Our in-house academy offers a broad range of vocational training courses and courses for acquiring advanced qualification. We qualify our employees for the requirements of their work and offer specific courses for personal continuing education.

Meanwhile, vocational education options at BITO include almost 15 occupations in many trades and professions. Suitable qualification can be acquired through the whole range of educational offers ranging from an apprenticeship to an academic degree. Providing the opportunity of professional training to young people is a valuable contribution to development.

Demographic changes are influencing the support of older people more and more. With the BITO pension model, we are making an important contribution to supporting the continued existence of our retired employees.



BITO
Company party 2011



"Take responsibility for the future!"



Sustainability



Being strong advocates of a holistic approach to management, we constantly strive to harmonise the goals of the people who are working for and with our company with the goals of society and environmental demands. We value environmentally friendly manufacturing processes and the exclusive use of recyclable material. Steel is reused, and used plastic containers are ground to make new granulate. BITO stands for responsible interaction with employees and with people in each relevant region. Gentle use of resources of every kind for the future and leaving a sustainable basis for the next generation have become part of our corporate objectives.





"BITO sponsors cultural activities, youth programmes and sports events"



Corporate Governance



Business organisations like BITO are a part of our society. So our responsibility doesn't end at the gates of the plant – especially given that we're among the region's largest employers. The goal cannot simply be to create jobs, but also to make additional contributions to the general good. BITO supports cultural activities, youth programmes and sport events in and around areas of employment. In close cooperation with clubs and social services, we make financial contributions to programmes for young people, organise cultural events and help to carry out special projects.

> **We see ourselves as an active member of society.**

Our owners, Fritz and
Sabine Bittmann,
with youth from SSV
Meisenheim





"We're wherever you are!"



BITO – national and international



Our subsidiaries:

- > Belgium
- > Bulgaria
- > Denmark
- > Dubai (Middle East)
- > France
- > United Kingdom
- > Italy
- > The Netherlands
- > Austria
- > Poland
- > Russia
- > Switzerland
- > Slovakia
- > Spain
- > Czech Republic
- > Ukraine
- > Hungary
- > USA

BITO Systems
in Belgium



Partner:

Bito maintains multiple sales partnerships worldwide and is thus internationally widely represented.

BITO Lagerteknik
in Denmark



Production locations in:

- > Meisenheim and Lauterecken
- > India

BITO Storage Systems
in the UK



Plant
India

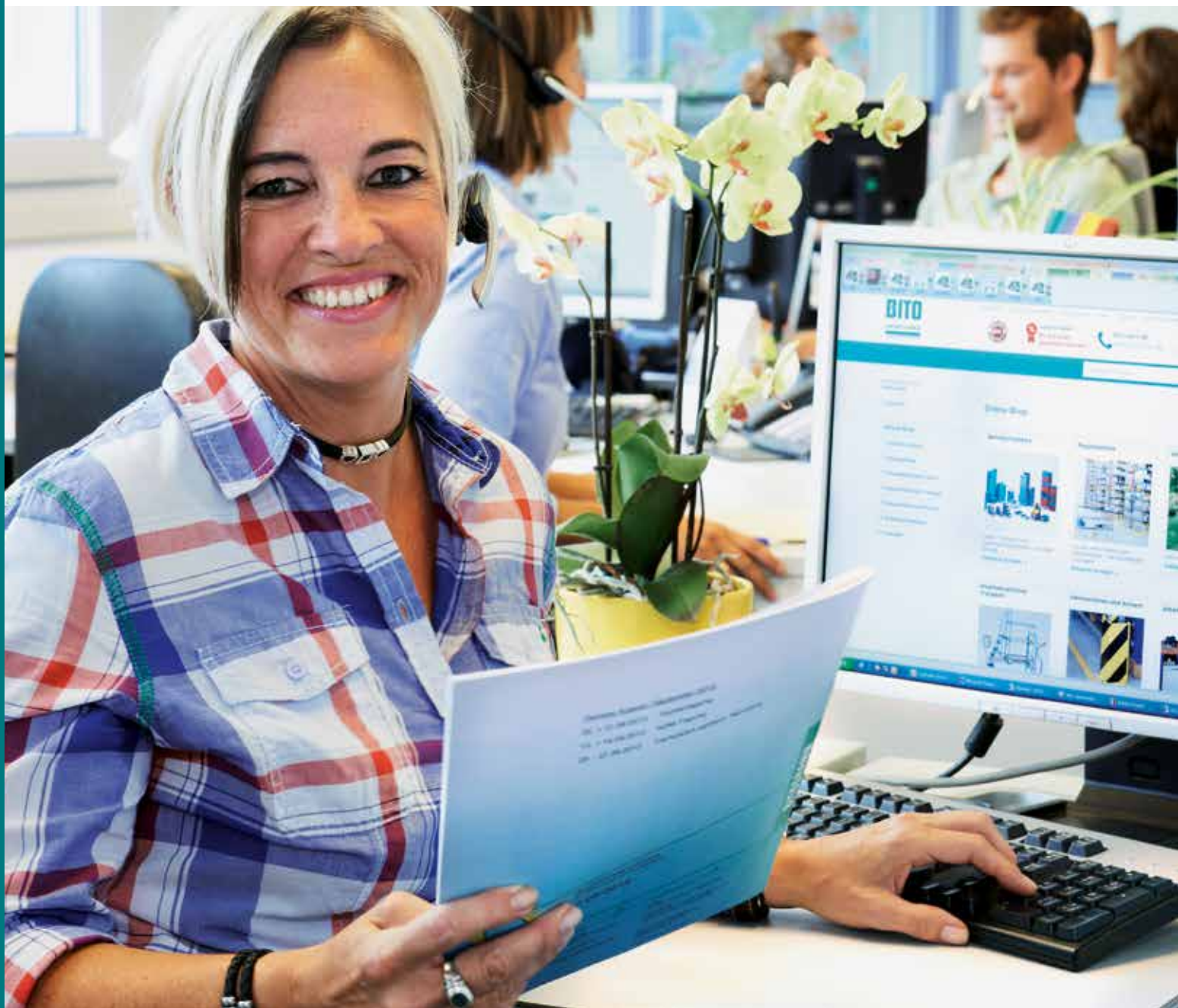


BITO Polska
in Poland





"Convenient ordering ..."



Your way to us



Contact us directly ...

- > Enter your postal code on the BITO Website to display the responsible technical consultant in your neighbourhood
- > by sending our online form with your comments, requests and ideas to your sales centre
- > or contact us with questions on our corresponding info hotline.

BITO online ...

... **www.bito.com**, here you can:

- > order our products directly
- > view case studies of storage and order picking systems realised by BITO
- > read about BITO in more than 15 languages

Catalogues, product folders ...

... **ask for free info material!**

- > BITO Image brochure
- > BITO Project Guide on storage and order picking systems
- > Overall catalogue "The warehouse pro"
- > Special interest product brochures

www.bito.com

BITO customers – a small selection

uvex

ESTÉE
LAUDER
COMPANIES



SONY

SEW
EURODRIVE



CARLO COLUCCI



MCXX



GLOVIS



LANCASTER

FENDT



PHILIPS



DACHSER

EUROTAPE
Connecting with care



REWE





www.bito.com

BITO Systems nv

Boomsesteenweg 97
2630 Aartselaar
Tel. +32 3 870 99 00

info.BE-NL@bito.com
www.bito.com