

BITO LEO



BITO
STORAGE SYSTEMS
NORDIC

custom | locative | flow

The LEO family keeps automation simple.



**BITO LEO
custom**



**BITO LEO
flow**



**BITO LEO
locative**

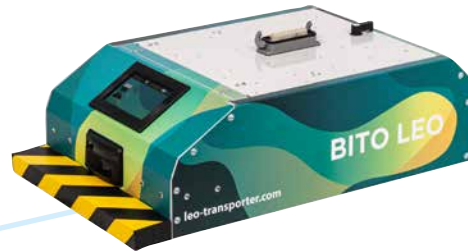
www.leo-transporter.com/sv-se/
www.leo-transporter.com/fi-fi/
www.leo-transporter.com/da-dk/



LEO »custom«

LEO custom is the basic unit for all on-top structures that can be perfectly adapted to your individual requirements.

- + Load capacity up to 55 kg
- + Maximum speed 0.7 m/s
- + Travel performance 48 km/day
- + Automatic charging
- + Ready for immediate start-up
- + ROI < 1 year on average
- + No IT interface or WLAN necessary
- + Pre-drilled mounting plate for customised on-top structures



The standardised hardware interface connects to

- electronic devices
- control panels
- additional sensors

<https://www.leo-transporter.com/da-dk/produkter/leo-custom/>

<https://www.leo-transporter.com/sv-se/products/leo-custom/>

<https://www.leo-transporter.com/fi-fi/products/leo-custom/>



LEO »locative«

With LEO custom as basic unit, LEO locative is the ideal solution for transporting bins and cardboard boxes around your premises. LEO autonomously delivers goods to its destination.

By simply passing through patented transfer stations, LEO locative picks up or drops off bins or cartons without any delay.

- + Suited for bins sized up to 400 x 600 mm
- + Load capacity 35 kg
- + Single and twin stations
- + Powered rollers form an interface to conveyor systems
- + Buffer lanes can be used for intermediate storage

picture shows
extra equipment



<https://www.leo-transporter.com/da-dk/produkter/leo-locative/>

<https://www.leo-transporter.com/sv-se/products/leo-locative/>

<https://www.leo-transporter.com/fi-fi/products/leo-locative/>

LEO »flow«

LEO flow is the space-saving, driverless solution for supporting logistics in production environments.

With LEO custom as basic unit,
LEO flow features powered rollers.

- + Load capacity up to 35 kg
- + Suited for bins sized up to 800 x 600 mm
- + Ideal for use on conveyors
- + Automatic lifting function available as optional feature
- + Particularly space-saving solution

picture shows
extra equipment



<https://www.leo-transporter.com/da-dk/produkter/leo-flow/>
<https://www.leo-transporter.com/sv-se/products/leo-flow/>
<https://www.leo-transporter.com/fi-fi/products/leo-flow/>

Navigation & Control

Track guidance

The LEO AGV family uses vision-based navigation.
The transporters are equipped with a camera sensor
that recognises the travel tracks marked on the floor.

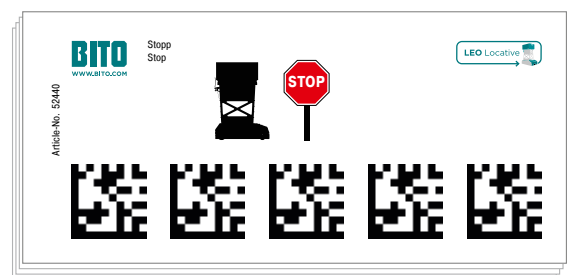
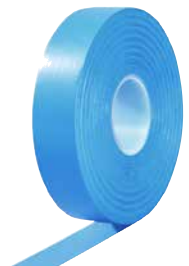
Markers

BITO LEO markers communicate directions and other
commands to the LEO vehicles, thereby serving as
"traffic & road signs". The markers are simply pasted
alongside the travel track.

Smartbox

The Smartbox is a decentralised control unit especially
designed for the LEO system. It transmits driving
commands to the LEO vehicles and is able to manage
traffic at intersections.

In addition, external systems such as a
warehouse management system can be
integrated using Smartbox technology.



<https://www.leo-transporter.com/da-dk/teknologi/leo-control-system/>
<https://www.leo-transporter.com/sv-se/technology/leo-control-system/>
<https://www.leo-transporter.com/fi-fi/technology/leo-control-system/>

www.leo-transporter.com/sv-se/
www.leo-transporter.com/fi-fi/
www.leo-transporter.com/da-dk/

LEO family.

The most user-friendly
automated guided vehicle (AGV)
on the market.



KEEPING AUTOMATION SIMPLE



**BITO LEO
custom**



**BITO LEO
locative**



**BITO LEO
flow**

BITO STORAGE SYSTEMS NORDIC

Agerhatten 16C, Indg. 4
DK-5220 Odense SØ
Tel: +45 70 21 51 51

info.dk@bito.com
www.bito.com

Florettgatan 29 C
SE-254 67 Helsingborg
Tel: +46 42 15 19 10

info.se@bito.com
www.bito.com

Äyritie 12 B
FI-01510 Vantaa
Tel: +358 10 324 6510

info.fi@bito.com
www.bito.com

REOLTEKNIKK AS

Hellenvegen 22
NO-2022 Gjerdrum
Tel: +47 6393 5200

post@reolteknikk.no
www.reolteknikk.no

www.leo-transporter.com/sv-se/
www.leo-transporter.com/fi-fi/
www.leo-transporter.com/da-dk/