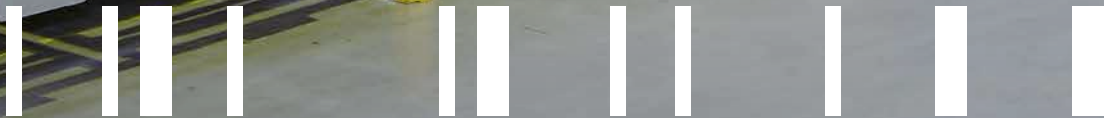


BITO Pallet live storage

A BIT OF PRODUCTS.



www.bitos.com

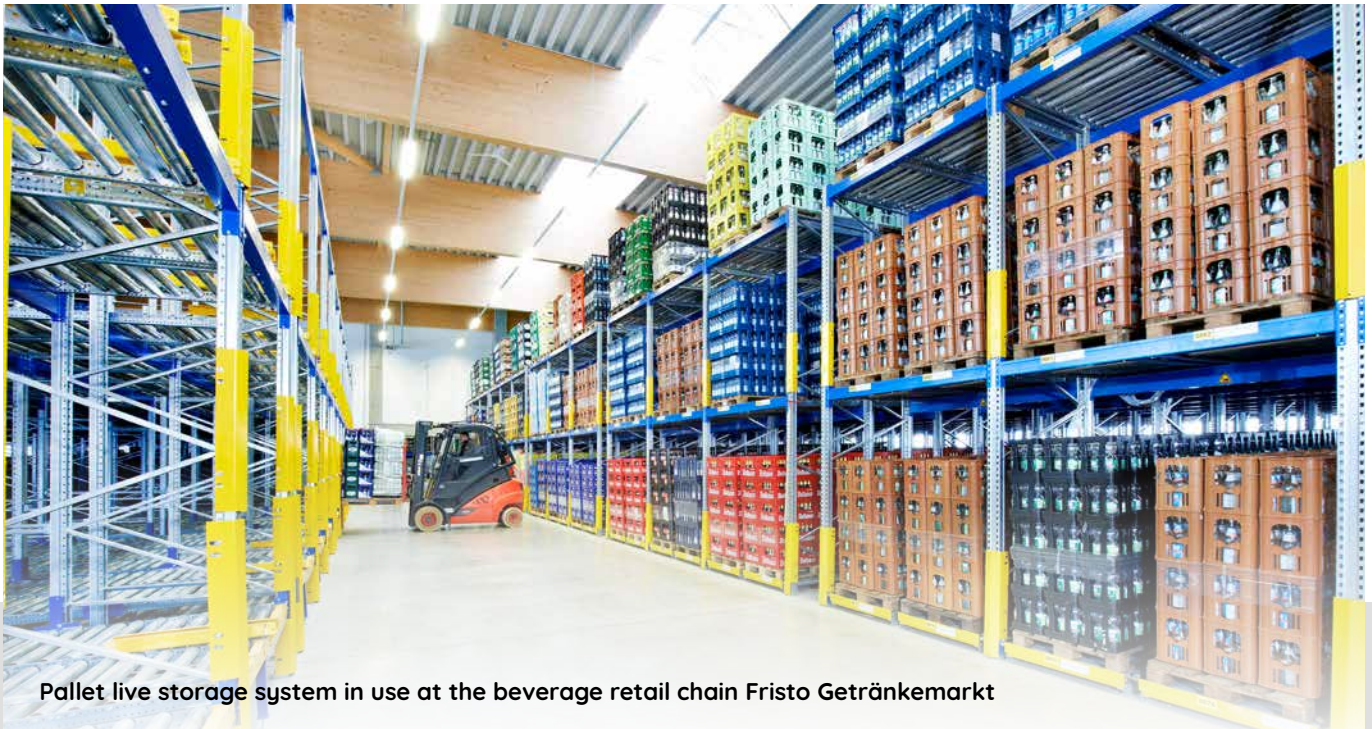


BITO
STORAGE
SOLUTIONS

BITO Pallet live storage – Efficient use of floor space and warehouse height

The **pallet live storage system** enables very compact and organised storage of palletised goods. As a result, order throughput times are shortened and internal supply chain processes are improved. This avoids downtime, boosts warehouse productivity and reduces storage costs.

Pallet live racking only needs two service aisles located at opposite ends: one aisle is used for loading goods and the other one for order picking, saving up to 60 percent of the storage space needed for static pallet racking.



Advantages of system:

- ✓ In contrast to floor stacking, flow storage provides direct access to all reference lines on stock
 - > High degree of flexibility and reduced order picking times
- ✓ Product storage in FIFO order (first-in, first-out)
 - > Easy control of sell-by dates, call-off quantities and production batches
- ✓ No downtime
 - > The clearly structured product presentation enhances stock control and enables process predictability.
- ✓ Separate replenishment and picking aisles
 - > Improved work performance, as lift truck operators cannot get in each other's way.
 - > Safe work environment
- ✓ Reduced number of service aisles, shorter in-house travel routes
 - > Substantial space savings of up to 60% compared to static pallet racking.
 - > Lower fuel/electricity consumption of service vehicles as in-house travel routes reduce by up to 40%.
- ✓ Easy floor cleaning
 - > Tiltable/hinge-up roller lane segments
 - > Hygienic product storage

Pallet live storage makes ideal use of space

Pallet live storage – High density storage on a small footprint

Effective inventory management

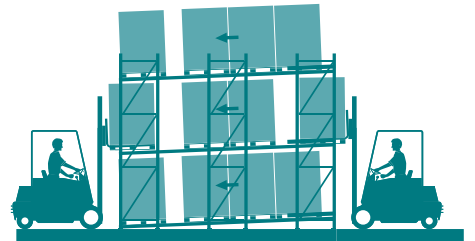
PALLET LIVE STORAGE SYSTEM

Products are stored on a FIFO (first-in, first-out) basis

The lanes of each pallet live block are replenished with stock from the loading aisle.

Products move by gravity to the opposite side for order picking, thereby ensuring perfect stock rotation.

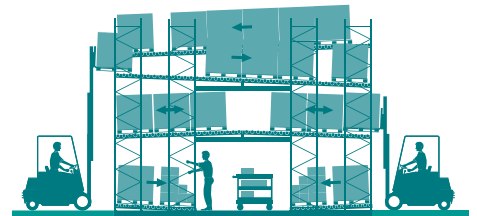
A load separator behind the first pallet position makes sure that service vehicles can retrieve the first pallet without having to compensate for lane pressure.



PICKING TUNNEL

at floor level height, product buffer in the level(s) on top

Separate working aisles prevent that loading interferes with order picking. Sufficient product supplies in the lanes ensure constant product availability. The integrated picking tunnel provides a safe work environment for unit load picking from the live storage lanes on either side which can be quickly replenished from the buffer levels on top. Racking configurations with integrated picking tunnels make maximum use of the available headroom.



PALLET PUSH-BACK SYSTEM

Products are stored on a LIFO (last-in, first-out) basis

Pallets are loaded into a lane at the racking front by pushing

them against the gradient.

Upon retrieval, the other pallets in that lane move forward at the same speed the first pallet is taken out.

Every BITO push-back facility is supplied with brake rollers to make sure that pallets do not accelerate beyond control and to exclude any risk of damage or injury. Push-back racking is accessed from one side only. Products are stored in LIFO order.



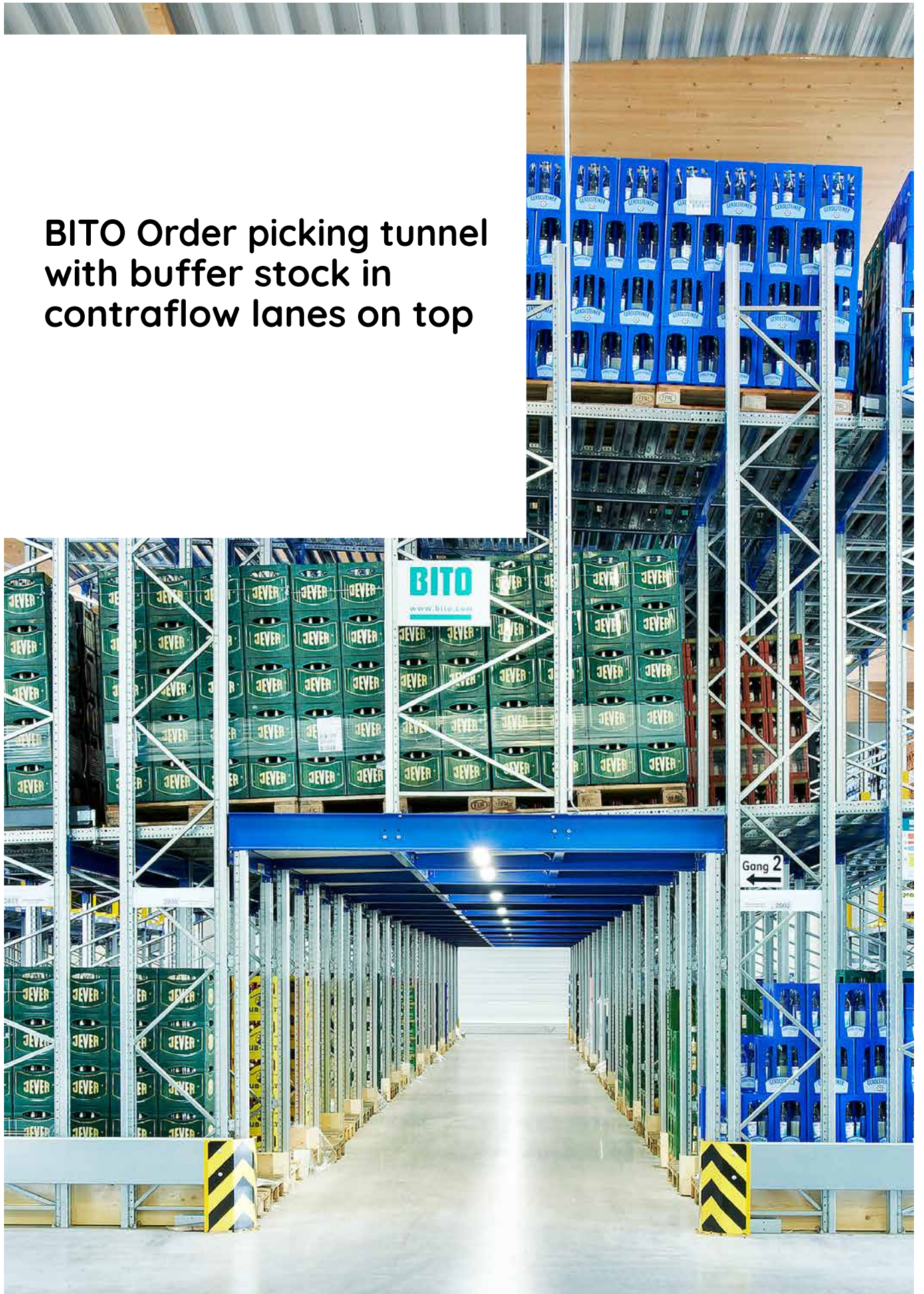
BITO Picking tunnel – Safe and fast product retrieval

This configuration is particularly suited for picking fast-moving items off the pallet. All reference lines are in direct access on both sides of the tunnel. As soon as an empty pallet is removed from the picking side, the next pallet moves forward from its replenishment position to the picking position.



- ✓ Loading does not interfere with order picking.
- ✓ Optimum utilisation of cubic space.
- ✓ Travel paths are reduced to a minimum.
- ✓ All product lines are directly accessible.
- ✓ Full pallet loads can be taken from the upper buffer area, while unit loads are hand-picked in the picking tunnel.
- ✓ The buffer pallet sits right behind the picking pallet.

**BITO Order picking tunnel
with buffer stock in
contraflow lanes on top**



Maintaining clean and tidy work areas boosts productivity

About the customer:

The pet food manufacturer Vet-Concept GmbH & Co. KG near Trier, Germany, produces and sells high-quality dry and wet food, as well as pet food supplements, grooming products, chewing articles and other accessories. The products are sold mainly through the company operated online store, and there is also a small shop in Föhren for in-store pick-up.

BITO has accompanied the company since its foundation. Meanwhile, Vet-Concept use almost the entire BITO product portfolio, maintaining clean and tidy work areas for more efficient working.

Customer requirements:

- Compliance with strict hygiene standards
- The storage installation was to accommodate heavy food bags and canned food as well as lightweight items such as grooming products, chewing articles and other accessories.
- 100% availability of all items
- Maintain existing processes, increase storage capacity.



The BITO Solution

- Vet-Concept use BITO pallet live storage racking for storing heavy animal food bags and canned food. The upper levels are used as buffer and replenishment stock while the floor level is used for item picking from live storage lanes.
- Since pet food products are goods with an expiry date, products are stored in FIFO order.
- This saves a lot of space and keeps walking distances short.
- The customised racking configuration in combination with standardised processes enable Vet-Concept to create efficient workflows with instant product accessibility in order to process customer orders as quickly as possible.
- The high demands on hygiene, product integrity and freshness are met at any time.



What our customers say:



Since our founding, the cooperation with BITO-Lagertechnik has always been very successful. We started out small and grew stronger and stronger over the years. It was and is important to be accompanied by a competent logistics provider who gives good advice during growth phases, contributes the right ideas and who is a full-service provider with a comprehensive portfolio to cater for varying needs.

We always get good advice and one phone call is enough to find a solution in an unbureaucratic way. In addition, the quality of the products speaks for itself and the price/performance ratio is well-balanced.

Torsten Herz

Managing Director and co-owner of Vet-Concept GmbH & Co. KG



+1 410 892 6658

WE TAKE THE TIME
TO GIVE ADVICE.

BITO Storage Solutions US, Inc.

10621 Iron Bridge Road, Suites M-N
US-20794 Jessup (MD)
Phone: +1 410 892 6658

sales@us.bito.com

www.bito.com



You can also join us online.



www.bito.com

A BIT OF YOUR LIFE.

