



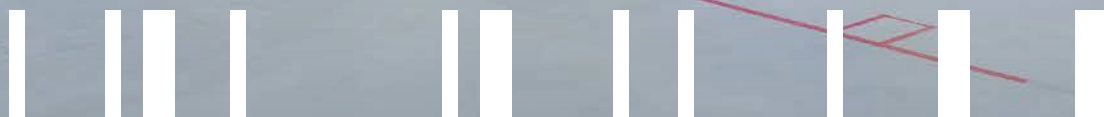
BITO Multi-tier shelving



A BIT OF
PRODUCTS.



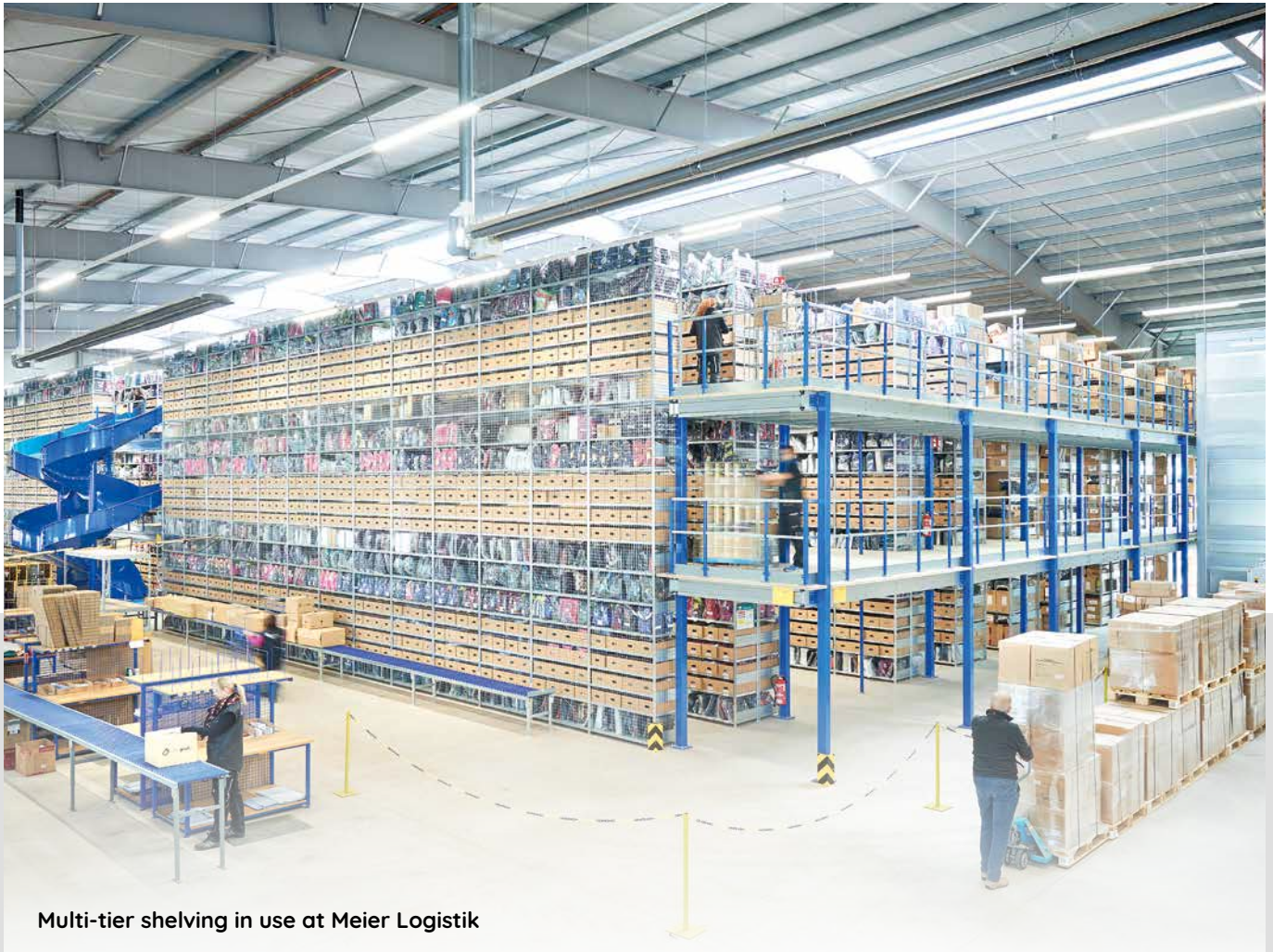
www.bitto.com



BITO
STORAGE
SOLUTIONS

BITO Multi-tier shelving makes best use of space

Multi-tier storage installations are designed to make full use of the vertical space in your warehouse while multiplying the available floor area. They are mainly used for storing and picking non-palletised loads, small parts in bins, unit loads or individual items that can be hand-picked.



Multi-tier shelving in use at Meier Logistik

Benefits of multi-tier storage installations:

- Full use of the available warehouse height and floor surface
- Organised storage of a large amount of items in limited space
- Easy, quick and safe access to all stock items on any level
- Storage locations can be assigned according to turnover frequency
- Low investment compared to automated systems

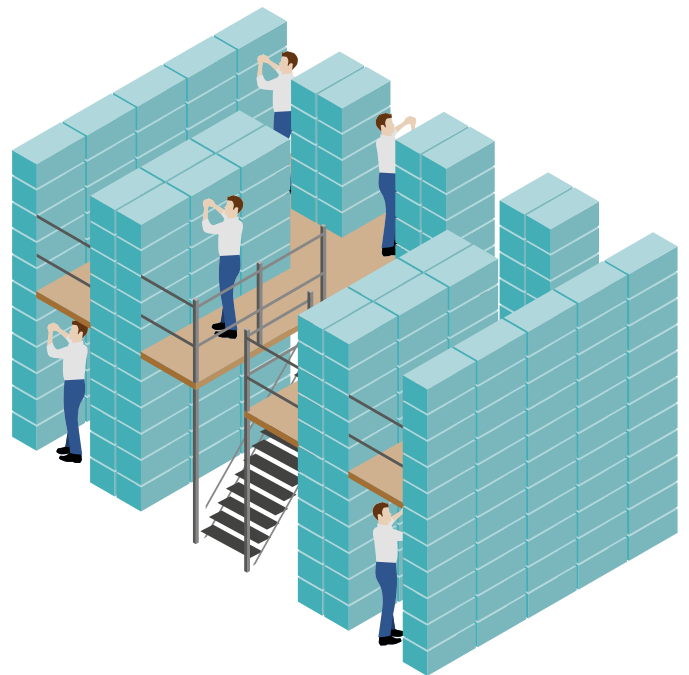
Product benefits:

Maximum use of storage space

- Full use of the available headroom, thereby maximising storage capacity in your existing building.
- In comparison to a single-tier design, multi-tier shelving improves floor space utilisation and reduces building occupancy costs.
- Order pickers can work simultaneously on several levels.

The BITO Solution

- Easy adaptation to seasonal peaks and other variations in demand
- No automation needed to reach heights
- Multi-tier shelving can accommodate a large variety of products within easy reach
- Ideal for fast-moving items
- Additional shelving can be added at any time to address growth



Cost efficiency

Low investment costs

The investment costs for a multi-tier system amount to only a fraction of the sum that has to be invested in an automated system. This reduces the financial risk, especially when a flexible solution is needed.

Centralised warehousing

Warehouse capacities can be easily expanded while substantial handling and logistics costs can be reduced.

A **BIT OF** YOUR LIFE.

Spotlight on the key component of multi-tier shelving: BITO shelves

Our **shelves** are available in various length, width, height and load capacity options and provide utmost flexibility for storing a wide array of products and for accommodating frequently changing product portfolios. **Shelf spacing** can be adjusted in 25 mm increments.

The modular system offers versatile solutions for equipping a wide variety of working environments from offices, stockrooms, car garages to warehouses and picking towers.



Watch our video:



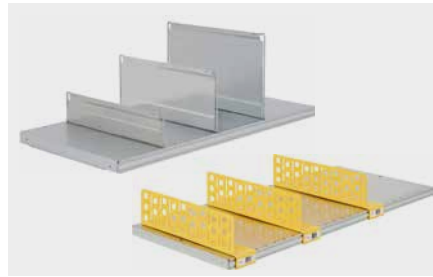
www.youtube.com/watch?v=xxAtL-n4iuRg

Additional equipment options for multi-tier installations



Flooring

Select the right flooring for your application. Not sure what you need? We are happy to advise you on the range of chipboard and mesh deck options.



Shelf dividers

Dividers help to organise your stock. They are slotted into the shelf perforations and can be easily relocated to change compartment size. Dividers allow you to identify new products at a glance and clearly separate product lines, returns etc.



Lifts

Alternatively, if material needs to be moved from one floor to the next, lifts are the ideal solution. BITO will be pleased to advise you in detail at the planning stage should you choose to explore this option.



Lighting

A well thought-out lighting plan brightens up your workspace, keeps your staff safe and improves productivity.



Pallet transfer position

Pallet transfer positions on mezzanine floors enhance operational safety and optimise your picking operations. We are pleased to equip your facility with the required number of transfer positions.



Spiral chute

Spiral chutes help to optimise the workflow between order picking areas and despatch zones by gently transferring products from one level down to the next.



Stairways

Stairs provide access to the different floor levels.



Sprinkler system

In order to help you comply with fire protection regulations, we prepare your facility with fixtures for installing a sprinkler system.

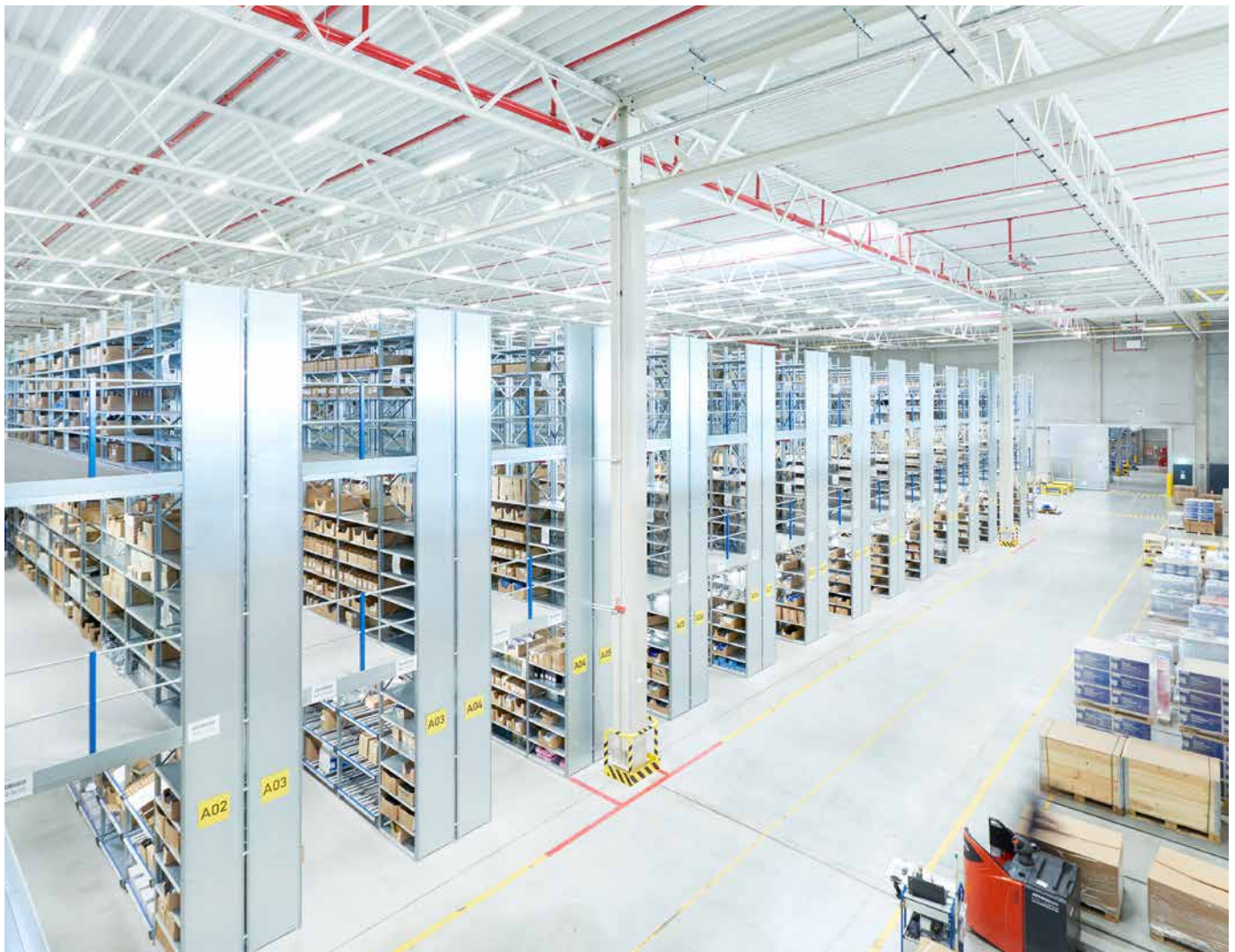
Scaling business to market demands is easy with multi-tier shelving

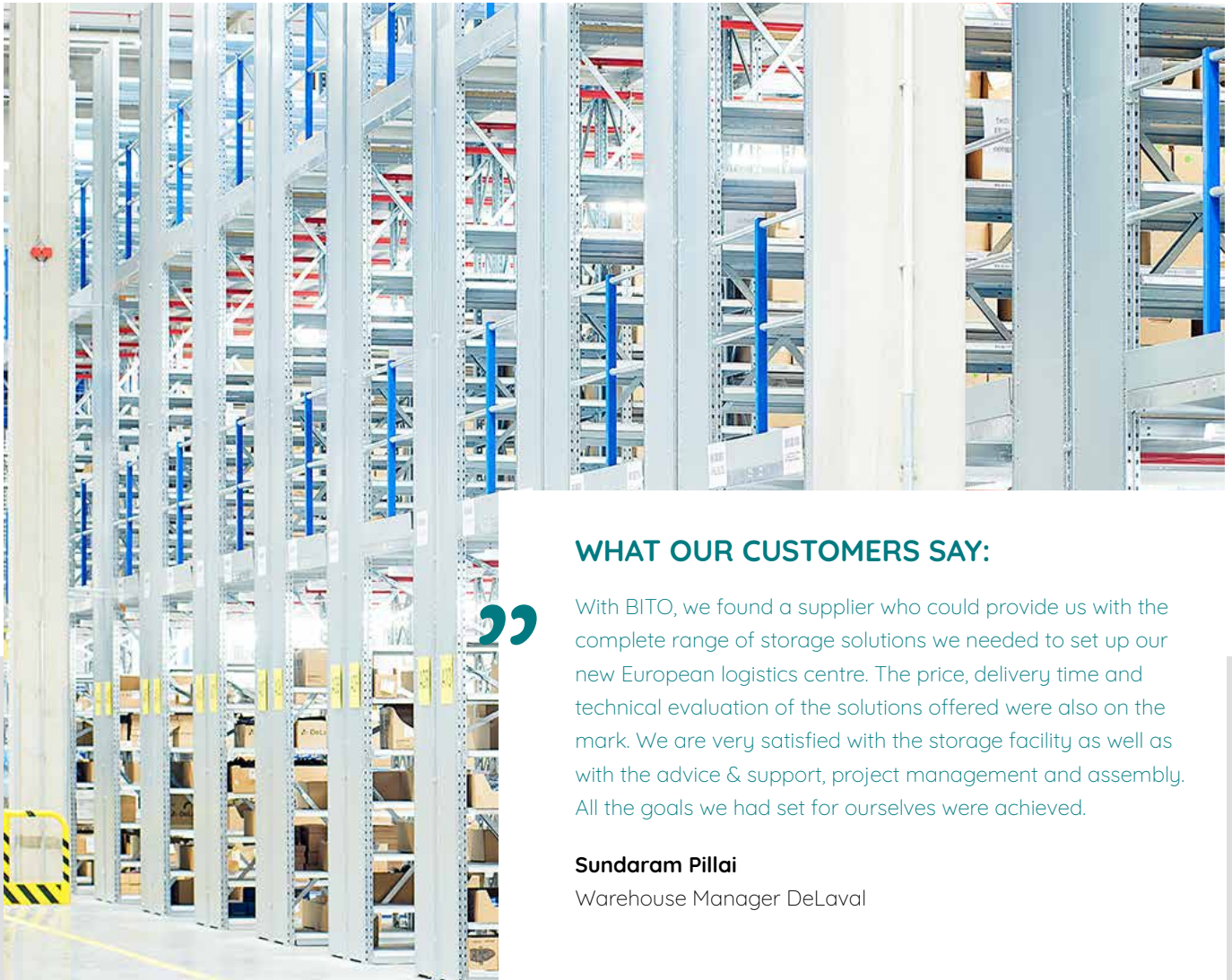
About the customer:

DeLaval is a leading global supplier of products and equipment for dairy production and animal husbandry. Their portfolio also includes a comprehensive range of services such as the sale of accessories, knowledge transfer and advice to help dairy farmers increase their farm profitability and improve animal welfare.

Customer requirements:

Fast-growing industries such as the e-commerce sector are constantly facing the challenge of having to adapt their logistics operations to meet changes. The question is always: Which solutions for warehousing and order picking are suitable to enable a company to flexibly react to market developments, to respond to seasonal peaks in demand, and to store and pick a wide variety and large quantities of items as economically as possible?





WHAT OUR CUSTOMERS SAY:



With BITO, we found a supplier who could provide us with the complete range of storage solutions we needed to set up our new European logistics centre. The price, delivery time and technical evaluation of the solutions offered were also on the mark. We are very satisfied with the storage facility as well as with the advice & support, project management and assembly. All the goals we had set for ourselves were achieved.

Sundaram Pillai

Warehouse Manager DeLaval



THE BITO SOLUTION

- Provide flexible-use storage space on a small footprint
- Build a three-tier shelving installation to make best use of space
- Create new storage and picking space at low investment costs

Customer benefits

- Valuable storage and picking space was gained with low investment costs
- Optimal use of the warehouse volume and floor surface
- Storage capacity was increased many times over
- Compact, space-saving, flexible and scalable solution



+1 410 892 6658

WE TAKE THE TIME
TO GIVE ADVICE.

BITO Storage Solutions US, Inc.

10621 Iron Bridge Road, Suites M-N
US-20794 Jessup (MD)

Phone: +1 410 892 6658

sales@us.bitto.com

www.bitto.com



You can also join us online.



www.bitto.com

A BIT OF YOUR LIFE.

