

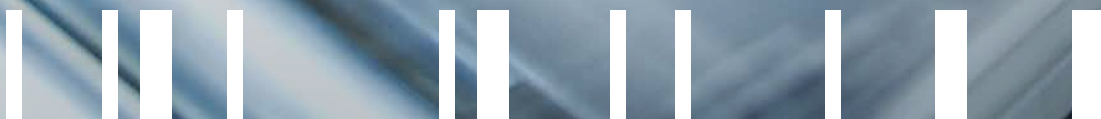


Designed for automated systems:
BITO XL Motion containers

A BIT OF
PRODUCTS.



www.bitto.com



BITO
STORAGE
SOLUTIONS



**XL Motion containers
for automated systems
are particularly quiet on
conveyors and can be
subdivided in many ways**

XL Motion containers create a low-noise work environment

The **BITO XL Motion** is a classic plastic container that has been specifically designed for use in automated warehouses. Quiet travelling on conveyors and the sturdy design make the BITO XL Motion a perfect fit for warehouses and distribution centres with a high degree of conveyor technology.

On request, the XL Motion can also be supplied with dividers to store different reference items in the same container.



XL Motion containers in use at Salewa GmbH

Sound solution for quiet container handling on conveyors

- ✓ Substantially reduced noise development during automated handling
- ✓ Made from rigid and durable plastic
- ✓ Also available as version with dividers
- ✓ Large internal volume
- ✓ The XL's wider base reduces the amount of steel required for racking construction.

Functional features for automated environments

The no-compromise solution for your warehouse



Support ribbing

Running diagonally to reduce noise development

Tread width

At least 100 mm

Water drainage holes in compliance with VdS CEA 4001

Optional drainage holes in the base

New double base design for added rigidity

Base width 389 mm

Approximately 26 mm broader than the European standard size base of 363 mm

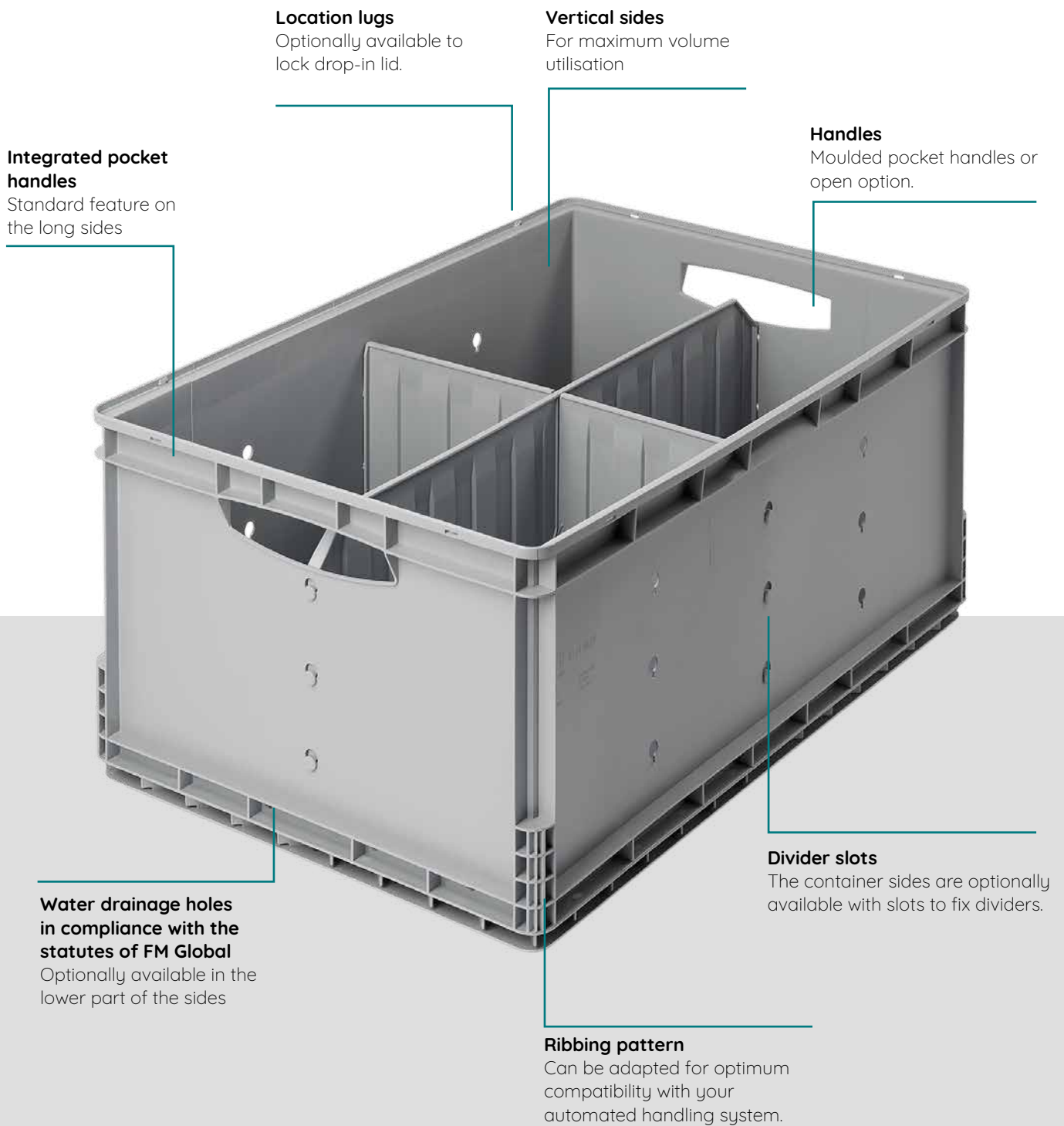
Custom colours
ON REQUEST



BITO[®]
STORAGE
SOLUTIONS

Secure stacking

Please note: XL Motion containers do not interstack with European standard size containers.



Location lugs
Optionally available to lock drop-in lid.

Vertical sides
For maximum volume utilisation

Handles
Moulded pocket handles or open option.

Integrated pocket handles
Standard feature on the long sides

Divider slots
The container sides are optionally available with slots to fix dividers.

Water drainage holes in compliance with the statutes of FM Global
Optionally available in the lower part of the sides

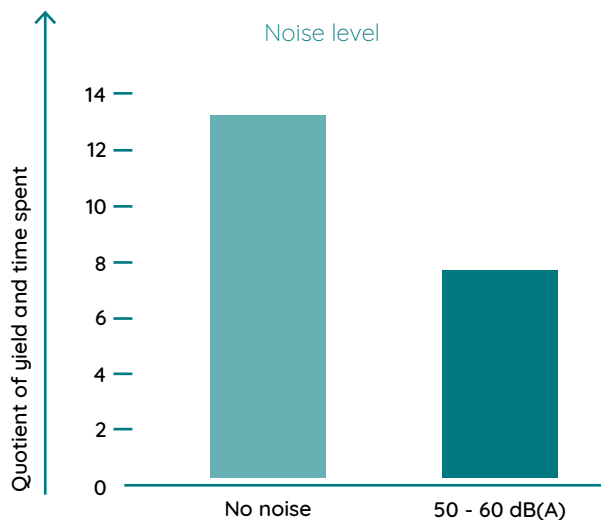
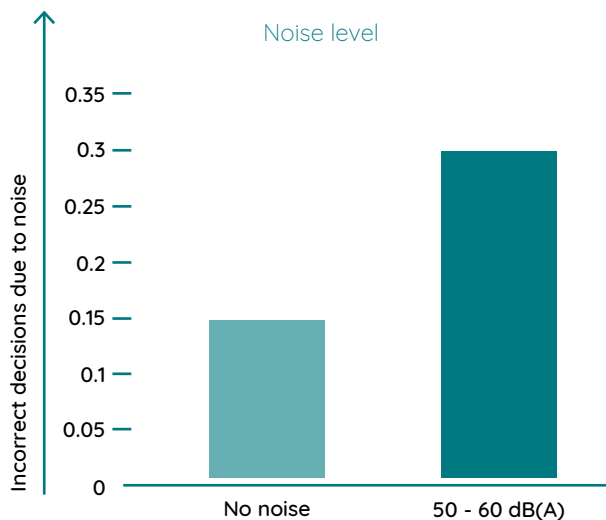
Ribbing pattern
Can be adapted for optimum compatibility with your automated handling system.

A **BIT OF FLEXIBILITY.**

XL Motion containers give a boost to performance

Lowest-ever noise development improves work performance

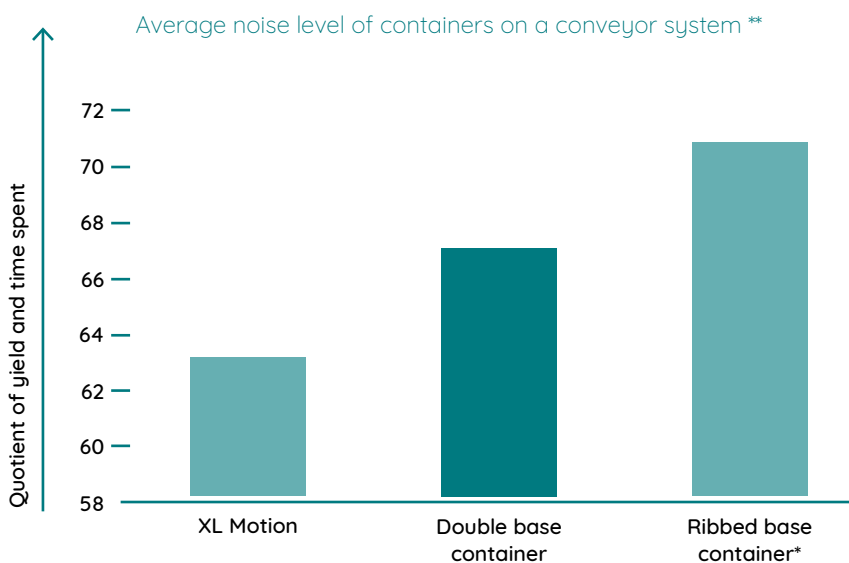
Noise has a negative impact on the physical and mental state: It affects muscle tone, the nervous system, hormonal control, staff motivation, stress levels and the ability to concentrate.



Source: BAuA: Lärmentwicklung - Gehör, Gesundheit, Leistung 2004 (Study on noise-related health hazards and performance)

Noise affects staff health and performance.

The EC Directive 2003/10 EC and the national noise and vibration occupational health and safety regulations specify limits of noise exposure. Disturbing and hearing-damaging noises must be kept to a minimum using latest state-of-the-art technology.



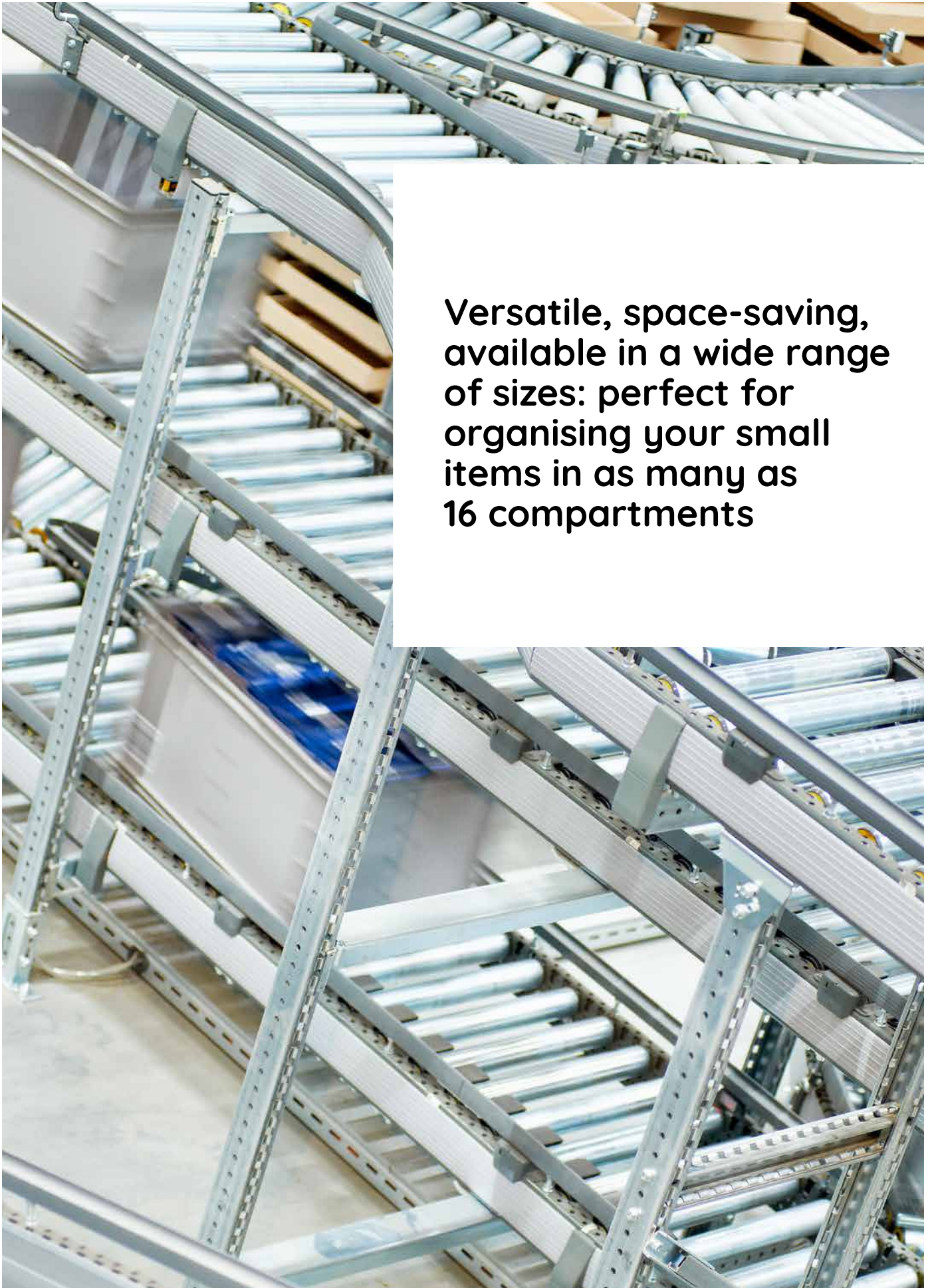
* Average noise development of empty containers from various manufacturers

** Noise development of a powered roller conveyor with a speed of 0.85 m/s, a roller diameter of 50 mm and a roller pitch of 67 mm, measured at a distance of 1 m above the conveyor belt.



**XL MOTION - THE
ULTIMATE SOLUTION
TO EFFICIENT AND
QUIET CONTAINER
HANDLING ON
CONVEYORS**





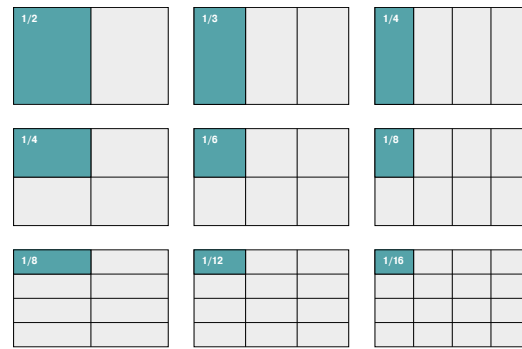
**Versatile, space-saving,
available in a wide range
of sizes: perfect for
organising your small
items in as many as
16 compartments**

XL MOTION

Compartment options



Dividers



Insertable bins



Size options



Base dimensions (LxW / mm) 799 x 399

Height (mm):	Internal dimensions (mm):	Volume (litres):	Load capacity (kg):	Stacking load (kg):
220	769 x 369 x 200	51,5	50	250

Base dimensions (LxW / mm) 599 x 399

Height (mm):	Internal dimensions (mm):	Volume (litres):	Load capacity (kg):	Stacking load (kg):
120	569 x 369 x 100	20.9	50	250
170	569 x 369 x 150	31.4	50	250
220	569 x 369 x 200	41.9	50	250
270	569 x 369 x 253	53.0	50	250
320	569 x 369 x 300	62.9	50	250
420	569 x 369 x 400	83.0	50	250

Base dimensions (LxW / mm) 650 x 450

Height (mm):	Internal dimensions (mm):	Volume (litres):	Load capacity (kg):	Stacking load (kg):
270	620 x 420 x 250	60.0	50	250
320	620 x 420 x 300	78.0	50	250
400	620 x 420 x 380	99.0	50	250

Reduced workplace stress

In their new multi-user logistics centre, logistics service provider **Hammer** operates with no-noise XL Motion containers in their automated storage installation.

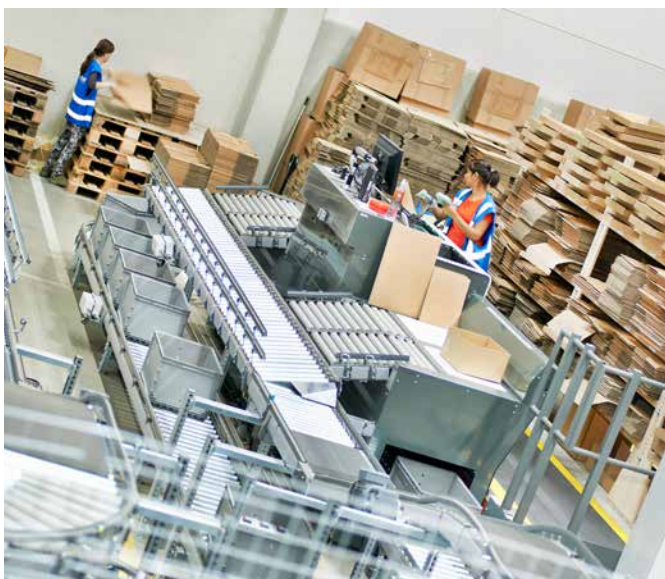
About the customer:

In 2015, the logistics service provider Hammer GmbH & Co. KG built a new multi-user logistics centre in Bedburg near Cologne. The 103,000 sqm logistics centre which also includes a shuttle-serviced storage facility primarily supplies a large DIY chain with small parts.

Customer requirements:

For their shuttle-serviced storage facility (small parts warehouse), the logistics service provider needed approx. 60,000 containers.

- The containers had to be very sturdy and suitable for automated systems.
- Noise pollution in the automated warehouse was to be minimised in order to create a more pleasant, less stressful work environment. Accordingly, the new totes were to run as quietly as possible on the automated system.
- A large number of small parts of all types must be picked efficiently.
- The customer was looking for large capacity totes to store as many small parts as possible.
- The containers were to maximise space utilisation within the racking installation.



Customer benefits

BITO's low-noise runner XL Motion ensures a quiet work environment

- The XL Motion ensures very quiet handling on conveyors. Significantly lower noise levels reduce stress levels for employees.
- Quieter operations create a more pleasant work atmosphere, resulting in greater job satisfaction and fewer absences due to illness and stress.
- Fewer mistakes are made as a result of a noise- and stress-reduced work environment.
- Rigid sides and the strong base allow to handle extremely heavy loads.
- Thanks to their large internal volume, XL Motion containers can store a larger amount of items. The container offers a particularly high net volume.
- Keeping more reference items in the same tote reduces the restocking frequency.
- The high utilisation rate of each XL Motion container ensures that fewer containers are needed to handle the same quantity of goods. As a result, fewer containers have to be moved, which in turn makes the entire system much more efficient.
- Due to the wider container base, automated storage installations can be built with narrower seat profiles. This saves a lot of construction material, thereby minimising plant construction costs.

What our customers say:



Low-noise handling of XL Motion containers makes work in the automated areas much less strenuous. We get very good feedback from our staff – everyone enjoys doing their job at the workstations. The pleasant environment even prompts employees from other areas to apply for jobs in the automated storage area. The quiet operation of the containers also helps improve concentration and reduces the error rate.

Lutz Harde

Managing director of the logistics centre of Hammer GmbH & Co. KG





+1 410 892 6658

WE TAKE THE TIME
TO GIVE ADVICE.

BITO Storage Solutions US, Inc.

10621 Iron Bridge Road, Suites M-N
US-20794 Jessup (MD)
Phone: +1 410 892 6658

sales@us.bito.com

www.bito.com



You can also join us online.



www.bito.com

A BIT OF YOUR LIFE.

