



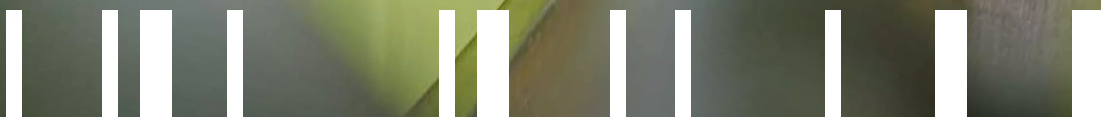
## BITOBOX MB Food & Delivery



A BIT OF  
PRODUCTS.



[www.bitobox.com](http://www.bitobox.com)



**BITO**  
STORAGE  
SOLUTIONS

# MB FOOD & DELIVERY

The solution for perfectly temperature-controlled and safe grocery deliveries.

Are you looking for the perfect container system to support your **online grocery business (E-grocery)** especially on the last mile to your customer's doorstep? Then the **BITOBOX MB Food & Delivery** is your choice! The system consists of an MB container, modular thermal insert boxes, cold packs and dividers.

The **MB Food & Delivery series** is a modular solution for shipping a wide range of groceries in a space-saving way.



Our BITOBOX MB Food & Delivery container comes with convincing benefits:

- ✓ Reliable shipping box in optimal dimensions to accommodate any type of packaged food
- ✓ Modular thermal inserts create various temperature zones to allow safe transport of dairy products and frozen foods. Cold packs can also be used for further space subdivision.
- ✓ Bottles can be safely transported in an upright position. Dividers ensure that nothing slips, tips over and leaks.
- ✓ For convenient handling, the top edge of the long sides is indented for fixing bag handles.
- ✓ A lid which can be security-sealed provides even greater protection during transport.
- ✓ The bin is made from food safe, recyclable plastic. With its sturdy design, high load capacity and resistance to wear and tear it is perfect for use in distribution cycles.
- ✓ Optionally available with stacking rails or a permanently attached hinged lid.



**The solution for perfectly  
temperature-controlled  
and safe grocery  
deliveries**

# Product variations and accessories

The all-in-one grocery shipping box!

## 1. BITOBOX MB Food & Delivery



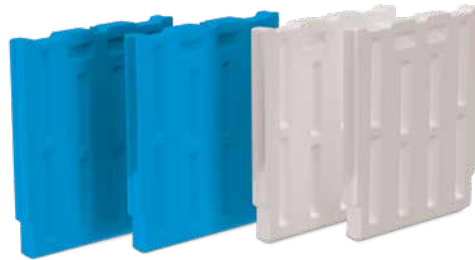
|                      |   |
|----------------------|---|
| Dimensions W x L x H | 600 x 400 x 373 mm  |
| Volume               | 67 l  |
| Load capacity        | 25 kg   |
| Stacking load        | 140 kg  |
| Colours              | lemon green, grey-blue  |
| Optional equipment   | Indentations for fixing bag handles, stacking rails, interlocking lid |

## 2. Thermal insert box



|                      |                        |                          |  |
|----------------------|------------------------|--------------------------|--|
| Format               | 1 full-size insert box | 2 half-size insert boxes | Bin divider with or without perforations |
| Dimensions W x L x H | 358 x 528 x 352 mm     | 358 x 263 x 352 mm       | 298 x 25 x 294 mm                        |
| Material             | EPP                    | EPP                      | EPP                                      |

### 3. PCM cold packs



|                      |                             |
|----------------------|-----------------------------|
| Format               | full-height                 |
| Dimensions W x L x H | 296 x 25 x 294 mm           |
| Weight               | 1,800 g                     |
| Melting point        | 0°C / -21 °C                |
| Application          | chilled and frozen products |

### Optional accessories

- **Single use security seals**

Suited for all MB and XL containers sized 800 x 600 mm, tamper-evident, 2 seals required per container.



- **Transport dolly**

Ideal for MB containers sized 600 x 400 mm



- **Barcoded security seals**

Single use seals with consecutive 8-digit numbering in barcode/human-readable format



- **Drop-on lid**

Reliable protection against soiling



# Keep cool – we have the ideal bin for your e-grocery business!

## About the customer:

The Berlin-based startup reBOX has made it their mission to fight plastic pollution caused by online retailing. They are now using a reusable shipping solution. The organic food delivery service "Bio-Lieferservice Landkorb" in Berlin counts among the reBOX customers. They deliver around 6,000 fresh products a week to some 3,500 customers.

## Customer requirements:

- The containers must be made of food-safe materials.
- They must be suited for multiple shipping cycles.
- They must be sturdy, eco-friendly and safe to handle.





## THE BITO SOLUTION

- MB Food & Delivery in use at reBOX



+1 410 892 6658

WE TAKE THE TIME  
TO GIVE ADVICE.

**BITO Storage Solutions US, Inc.**

10621 Iron Bridge Road, Suites M-N  
US-20794 Jessup (MD)  
Phone: +1 410 892 6658

[sales@us.bito.com](mailto:sales@us.bito.com)

[www.bito.com](http://www.bito.com)



You can also join us online.



[www.bito.com](http://www.bito.com)

A BIT OF YOUR LIFE.

**BITO**  
STORAGE  
SOLUTIONS