

BITO Large volume containers



A BIT OF PRODUCTS.



www.bito.com

BITO
STORAGE SOLUTIONS

BITO Large volume containers - light-weight, sturdy and hygienic

BITO Large volume containers are frequently used in industry and logistics to streamline warehousing. They are available in various sizes and designs, allowing flexible adaptation to **individual customer needs**. Top quality and a sturdy design make BITO large volume containers a valuable aid in optimising storage and material flow processes.



BITO MB container series in use at a metalworking company.

Benefits of BITO large volume containers:

✓ **Sturdy design:**

BITO large volume containers are known for their solid construction. They have a high load carrying capacity, are very durable and great for long-term use.

✓ **Versatility:**

The containers are available in various sizes and designs, allowing flexible adaptation to different storage requirements and product sizes.

✓ **Efficient storage:**

BITO large volume containers have been designed to help optimise storage operations and improve workflow efficiency in industrial and logistics applications.

✓ **Excellent stacking stability:**

Many large volume container series are stackable, which saves space during empty storage and transportation.

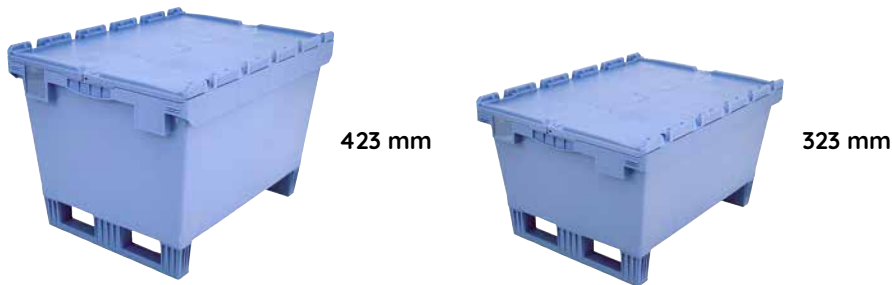
Take a look at our 3 favourites

BITO Heavy-duty containers SL86 800x600 mm



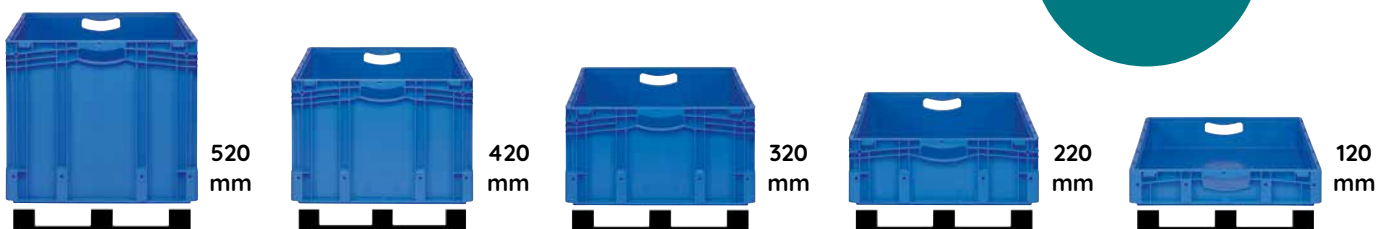
Load capacity
500 kg, stacking
load of up to
1,500 kg

BITO Multi-trip containers MB 800x600 mm



Load capacity
200 kg

BITO European size stacking containers XL 800x600 mm



Load capacity
200 kg

BITO Heavy-duty containers SL86



Sturdy design

SL86 containers are rugged for use in demanding environments.

Convenient handling

The ergonomic design ensures convenient container handling and easy transportation.

High load capacity

The series has been designed for high loads and can safely accommodate heavy objects.

Smooth interior surfaces

The interior surfaces are straight without recesses for easy cleaning.

Safe stacking

Heavy-duty containers SL86 can be stacked to save space when not in use.

Colour coding

Corner profiles can be supplied in various colours for easy stock identification.

BITO
STORAGE
SOLUTIONS



shop.bitto.com

Visit our website to view our current prices.

BITO Heavy-duty containers SL86

Useful features and accessories



Safe stacking

- The containers stack safely even when fully loaded.
- Static stacking capacity: 1,500 kg
- Dynamic stacking capacity: 1,000 kg



Lid options

- Hinged lid: permanently attached & sealable
- Drop-on lid: easy to put in place and remove



Dual colour design

- Colour coding for easy stock identification
- Container corner profiles can be supplied in 5 colours.
- Ask for minimum order quantities



Hinged half-drop door

- Optional feature



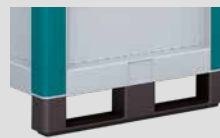
Space for your corporate logo and customised messages

- Various printing methods possible: hot stamping, pad printing, screen printing



Low proper weight

- SL containers weigh less than same size metal containers.



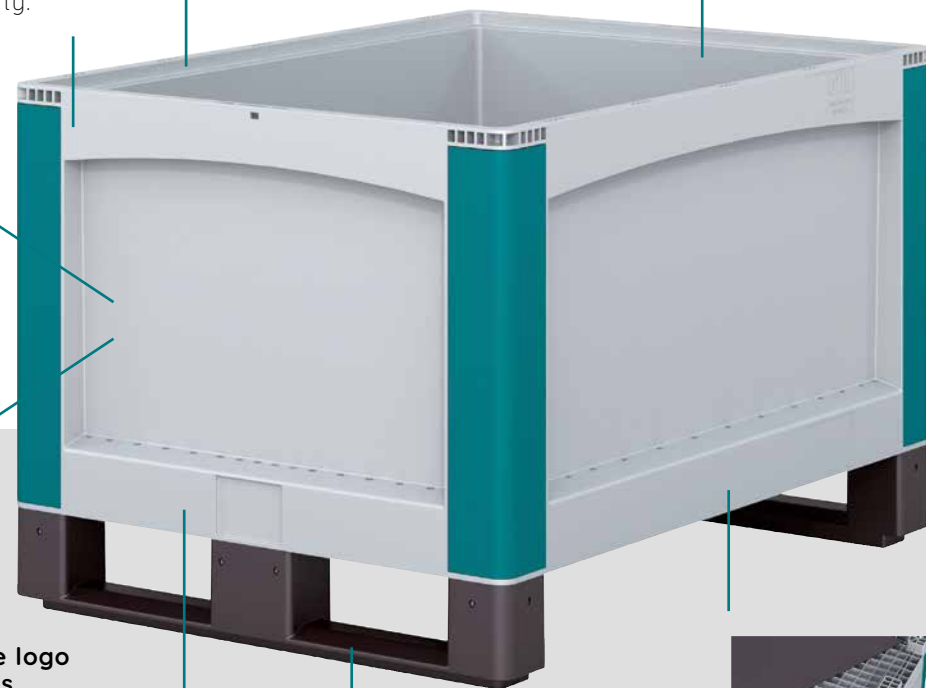
Runners

- Suited for fork lift or hand pallet truck handling
- Easy to mount and to remove



Double base

- Welded sandwich construction for heavy-duty applications
- Containers for automated storage (flat base, no runners) can be supplied upon request.



BITO Multi-trip containers MB 800x600 mm



Space savings of up to 70%

When empty, all MB containers including our 800x600 mm variant can be nested to save on storage volume and floor space. Space requirement reduces by up to 70% which ultimately saves you money.

Integrated label cover

As all containers of the MB series, BITO MB 800x600 multi-trip containers come with an integrated label cover. It protects address labels or other identification labels and keeps them well legible. There is no need to stick labels on the box, eliminating the cost of removing unsightly sticker residue.

Secure access

The BITO MB 800x600 large volume container can be optionally supplied with a hinged lid. The lid can be securely sealed with single-use seals to protect the goods from unauthorized access and possible damage during storage and transport. Seal numbering or labeling for control purposes or colour coding are possible on request.

BITO
STORAGE
SOLUTIONS



shop.bitto.com

Visit our website to view our current prices.

BITO Multi-trip containers MB

Useful features and accessories



Textured areas for adhesive stickers and labels
On the upper side of the lid.



Hinged lid

- Safe stacking
- Sealable in multiple ways
- Permanently attached to the container



Handles

- Ergonomic cup handles



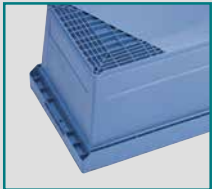
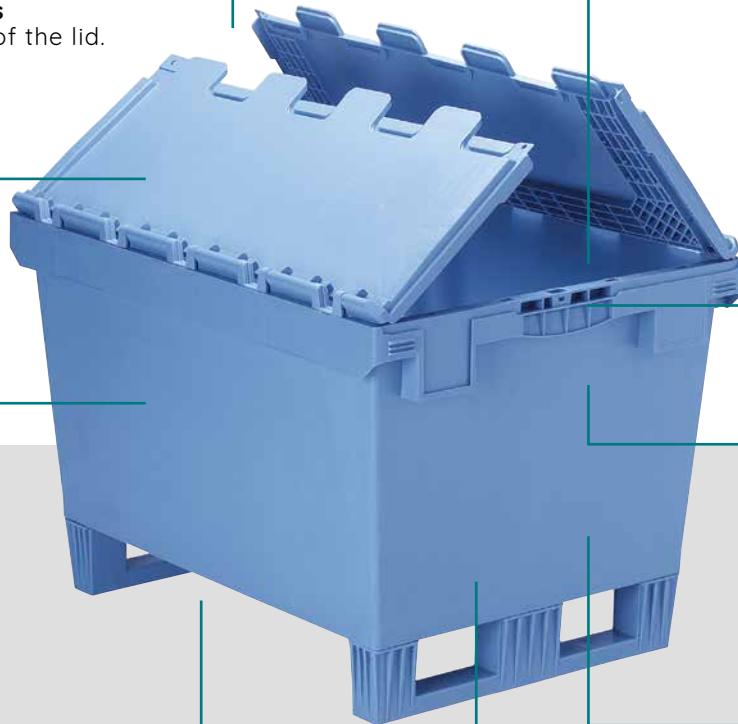
Single-use security seals

- Fitting for all containers of the BITO MB series, tamper-evident to deter unauthorized access



Barcoded single-use seals

- Consecutive 8-digit numbering in barcode/plain text



Base variations

- Standard base for loads of up to 50 kg
- Ribbed base for loads of up to 75 kg
- Double base for loads of up to 200 kg



Barcode / RFID label

- Optional feature



Runners

- Optional feature



Drainage holes

- Optional feature



Label cover

- Keeps address labels clean
- Safe positioning in recessed fields

BITO European size stacking containers XL 800x600 mm



Light-weight yet strong for high load capacities
Despite their low empty weight XL containers sized 800x600 mm can carry loads of up to 200 kg and have a stacking capacity of 800 kg.

Ergonomic handles
BITO XL handles are rounded and have a smooth hand rest, making it easy to carry and pull even fully loaded containers.

Several height options
BITO XL containers 800x600 mm come in 5 height options. Customers can choose the optimal size to suit their application and product requirements and to make full use of the available storage space.

Optional pick opening
Upon request, MBs can also be delivered with a pick opening, either on the long or the short side.



shop.bitto.com
Visit our website to view our current prices.

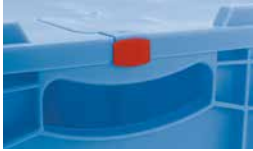
BITO European size stacking containers XL -

Useful features and accessories



View and pick opening

- Convenient order picking, also when containers are stacked.



Hinged lid

- Suited for high stacking loads
- Sealable in multiple ways
- Permanently attached to the container



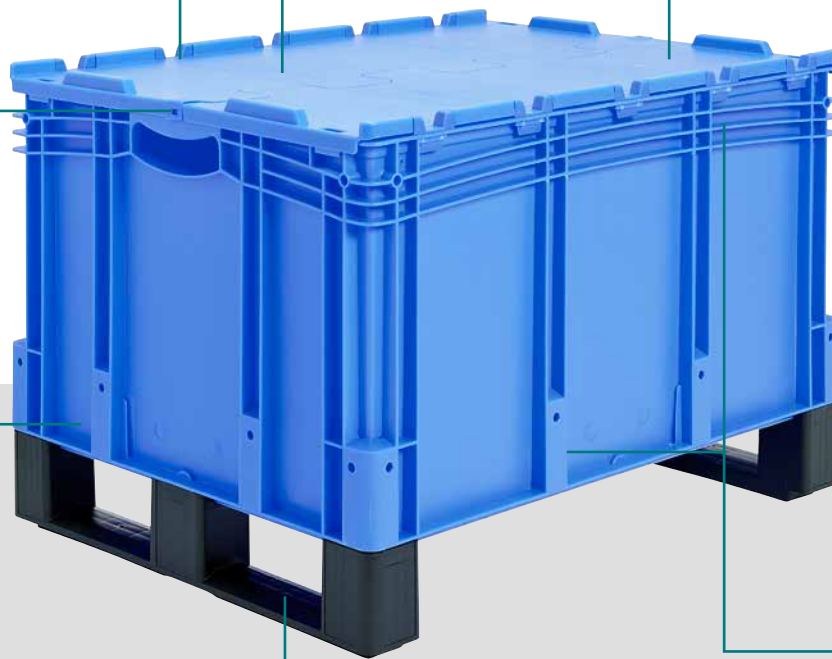
Ergonomic handles

- Open handholes
- Cup handles



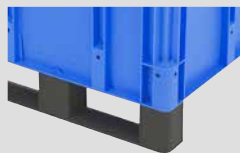
Single-use security seals

- Suitable for all XL containers, tamper-evident to deter unauthorized access



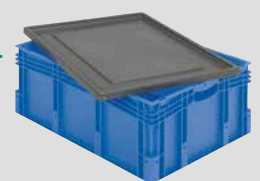
Base variations

- Standard base for loads of up to 60 kg
- Double base for loads of up to 200 kg
- Low-noise base variant for silent handling on conveyors



Runners

- Suited for fork lift or hand pallet truck handling
- Easy bolt fixing



Drop-on lid

- Optional feature

Large volume container SL86 in use at Schmersal

About the customer:

The Schmersal group, headquartered in Wuppertal, Germany, develops and manufactures some 25,000 mechanical and electro-sensitive switching devices, which is the largest range in the world for the protection of man and machine. The product portfolio ranges from micro-switches and sensor-based solutions to heavy-duty switching devices.

Customer requirements:

Replace the heavy and unwieldy steel mesh box pallets and heavy-duty metal containers used until then with a handy and light-weight alternative. The new load carrier must be easier to handle and allow better capacity utilisation compared to the steel mesh box pallets currently in use.

It is important that the new load carrier is suitable for all relevant storage and transportation tasks. The new large-capacity storage boxes need to carry heavy loads and must have a long service life.



The BITO Solution

Schmersal exchanged their conventional mesh box pallets and heavy-weight steel containers against BITO SL large volume containers. The SL containers are used for storing heavy parts in a much smaller space, as well as for transporting unfinished parts in ongoing production operations. Thanks to their smaller dimensions, they are ideal for smaller batches, ensuring a more efficient and economic material flow within the production plant. Moreover, the light-weight boxes are easy to handle.

Customer benefits

Using BITO large volume containers and switching to the 800 x 600 mm format saves an enormous amount of space and storage costs, making BITO SLs a particularly economical alternative.

The boxes can be stacked on Euro pallets to gain additional space; one Euro pallet can take two SL containers. Unlike standard mesh box pallets, SL containers are also suited for use in high-bay warehouses.

BITO SL large volume containers can carry loads of up to 500 kg. They have a sturdy design and are therefore not likely to require repair. SL storage containers can boast an ergonomic design and have a very high level of functionality thanks to the container's jam-free half-drop door.

Goods can easily be filled into the container and removed. SL containers help to keep storage areas tidy and uncluttered. Empty containers can be moved manually without auxiliary equipment.



WHAT OUR CUSTOMERS SAY:



Handling is much easier now. Our operators can now pick materials without effort and in an ergonomic working posture. On top of this, we saved a lot of storage space.

Adrian Hergarten

Responsible for material supply to the machining units





WE TAKE THE TIME
TO GIVE ADVICE.

+1 410 892 6658

BITO Storage Solutions US, Inc.

10621 Iron Bridge Road, Suites M-N
US-20794 Jessup (MD)
Phone: +1 410 892 6658

sales@us.bitoc.com

www.bitoc.com



You can also join us online.



www.bitoc.com

A BIT OF YOUR LIFE.

